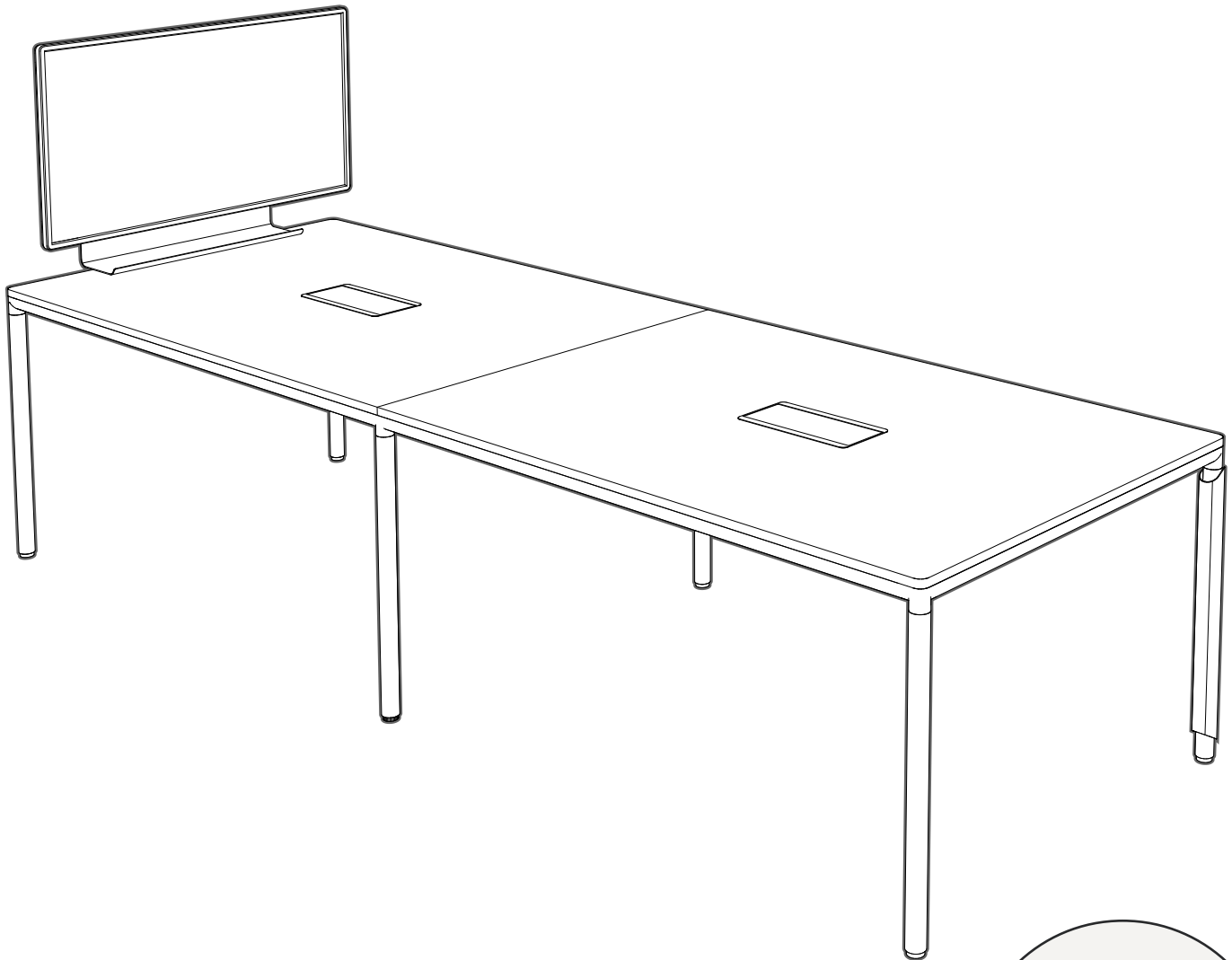


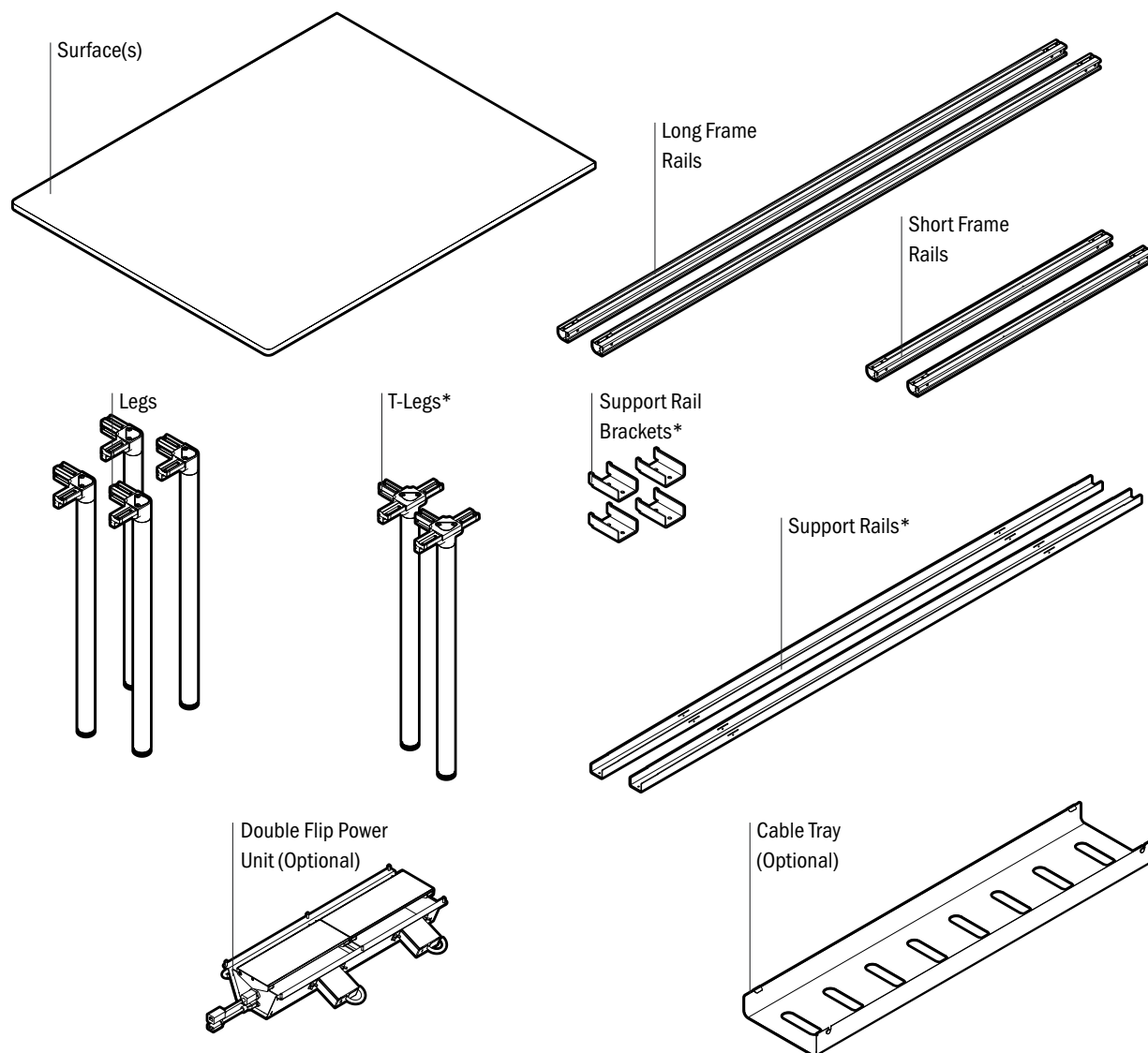
ASSEMBLY

C9 Meeting Tables + Accessories



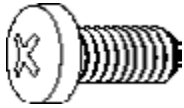
View Digitally

C9 Meeting Table Basic Components

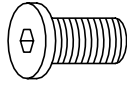


*Included only with certain table sizes

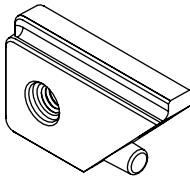
Hardware



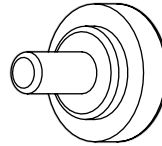
#10 x 1/2" Philips
Screw (122815)



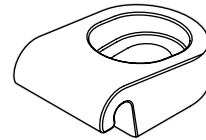
M6-1.0x12mm Low
Profile Cap Screw
(0001140)



Rail Nut (0001120)



Thumbscrew (0000638)

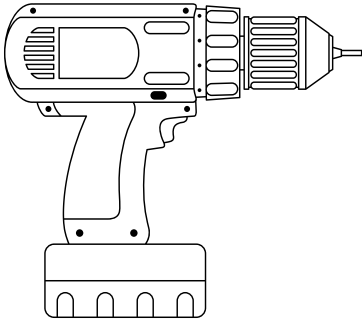


Top Clip (0001156)



#10 x 1/3 "
Philips Screw
(122815)

Tools



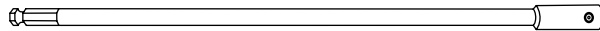
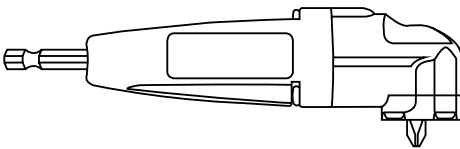
Electric Drill



Phillips Drill/Driver Bit



3mm Hex Drill/Driver
Bit



Additional tools such as a 90 Degree Bit and an 18" Extension are helpful for some steps

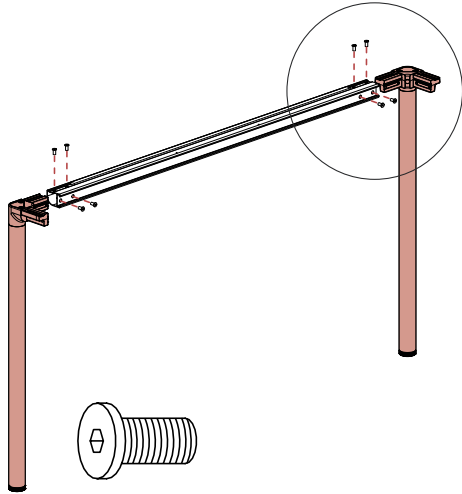
*No torque or ball bits should be used

1.

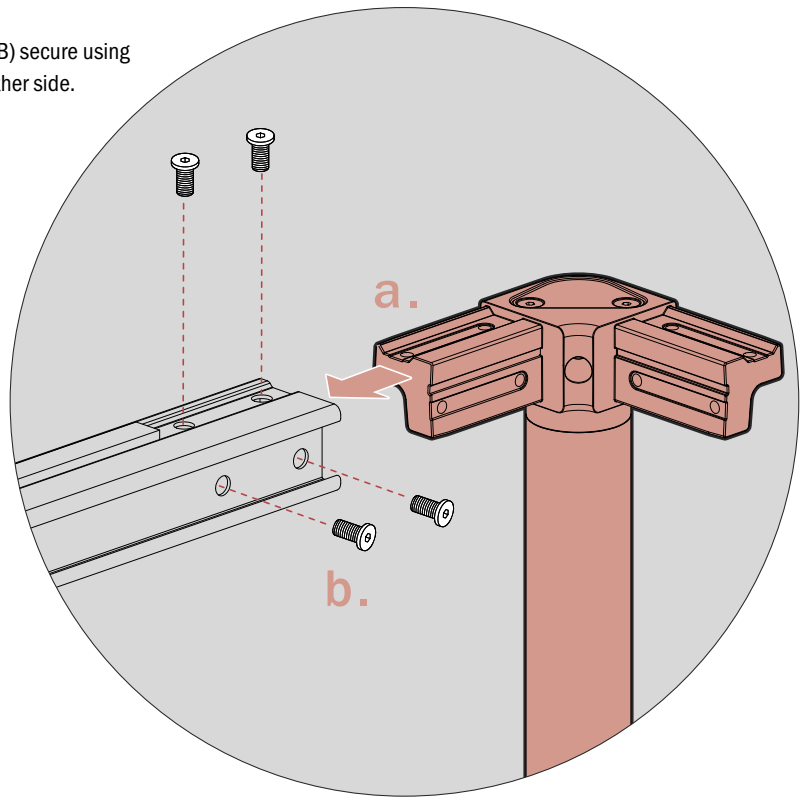
Attach Legs to Frame Rails

(A) Insert the legs into the short frame rail and (B) secure using 8 screws (0001140). Repeat this step for the other side.

Note: Start all screws before tightening.

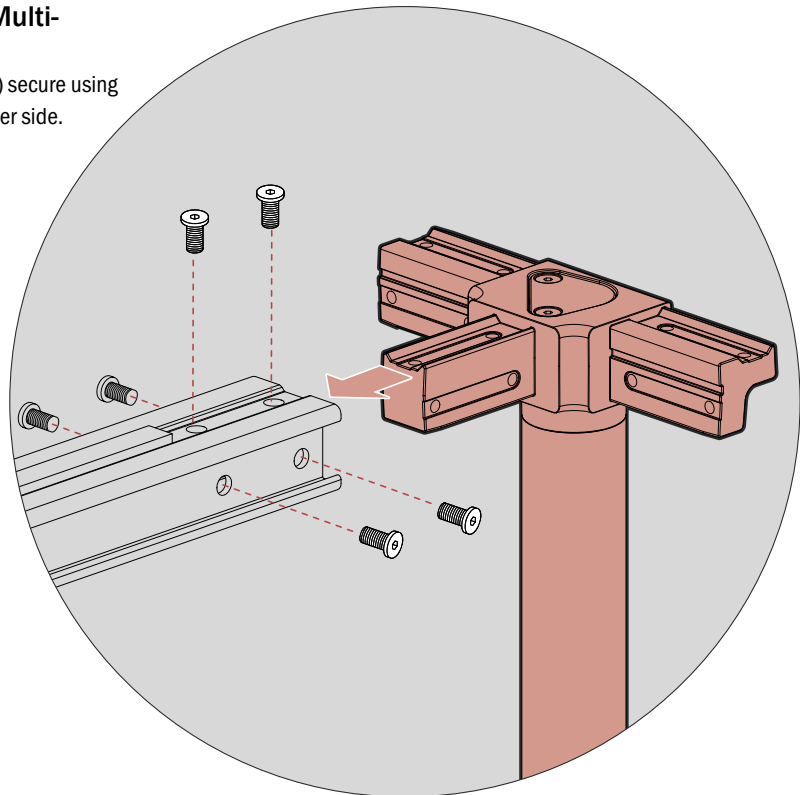
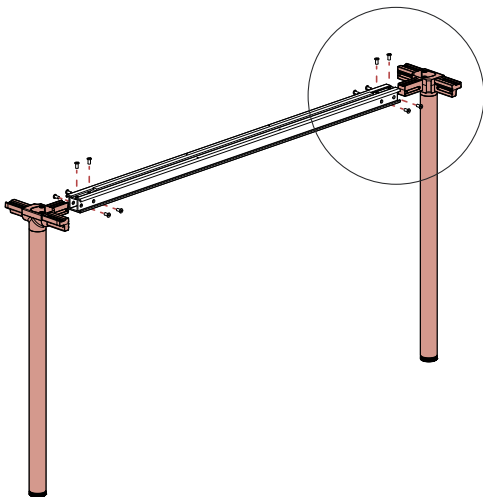


M6-1.0x12mm Low
Profile Cap Screw
(0001140)

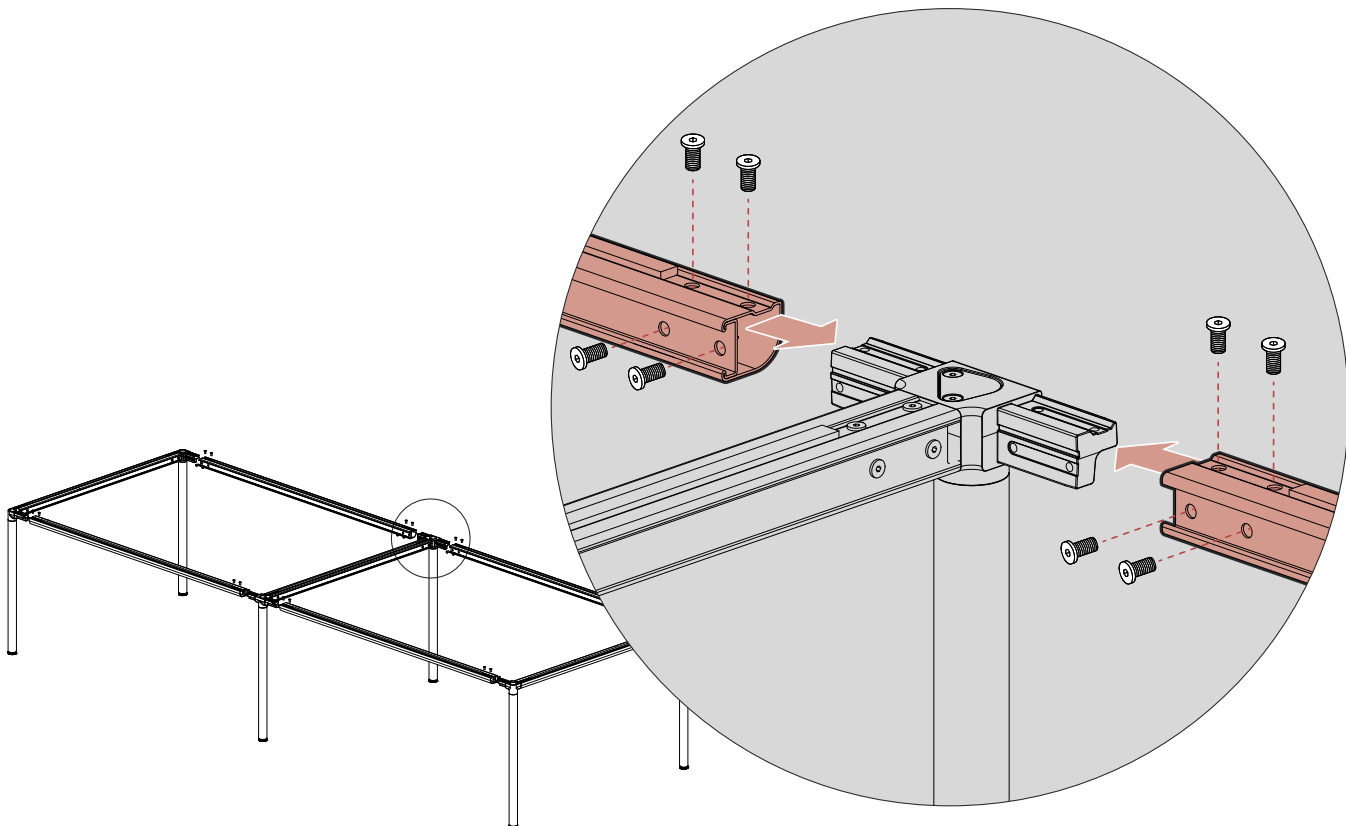
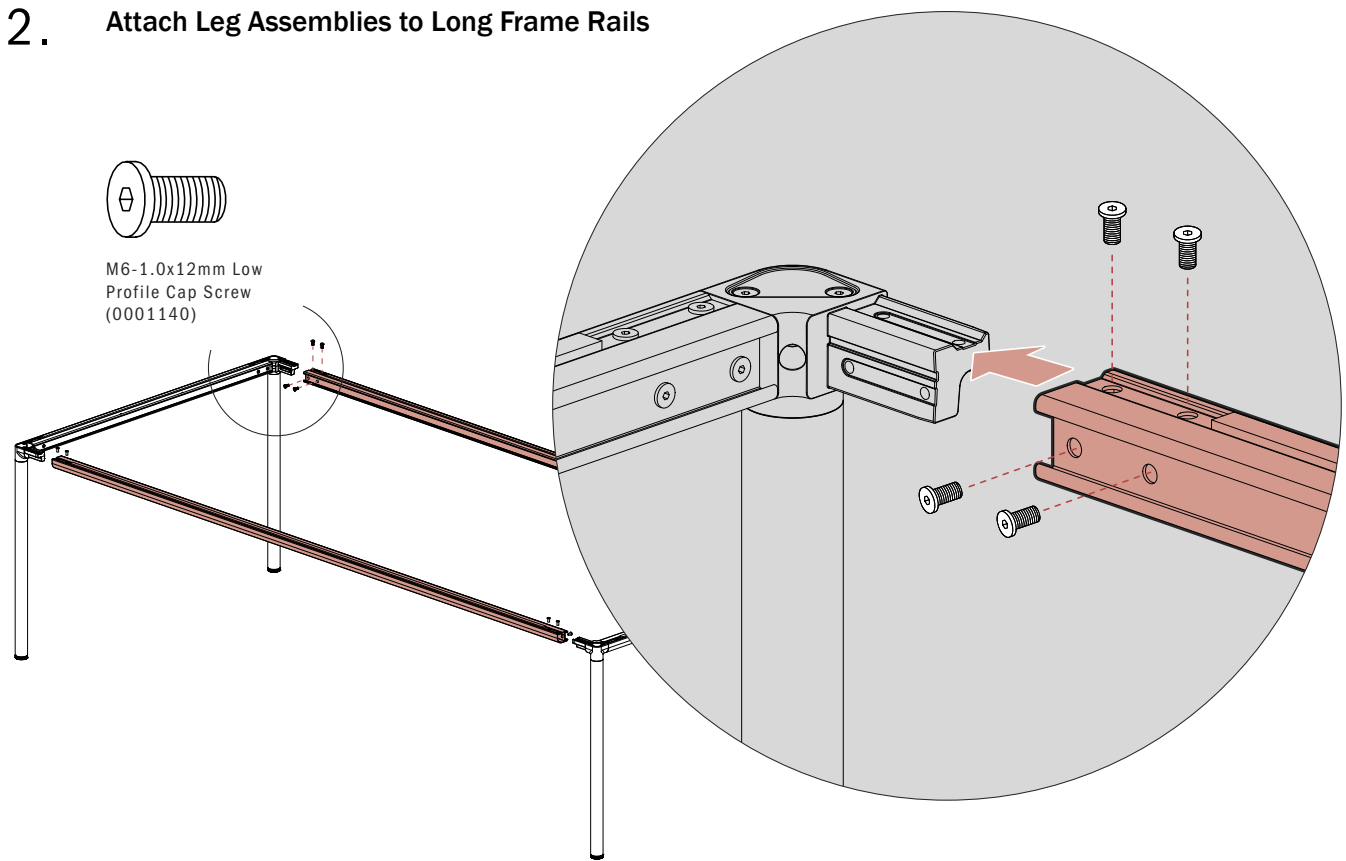


Attach T-Legs to Frame Rails (for Multi-Piece Tables Only)

(A) Insert the legs into the short frame rail and (B) secure using 8 screws (0001140). Repeat this step for the other side.

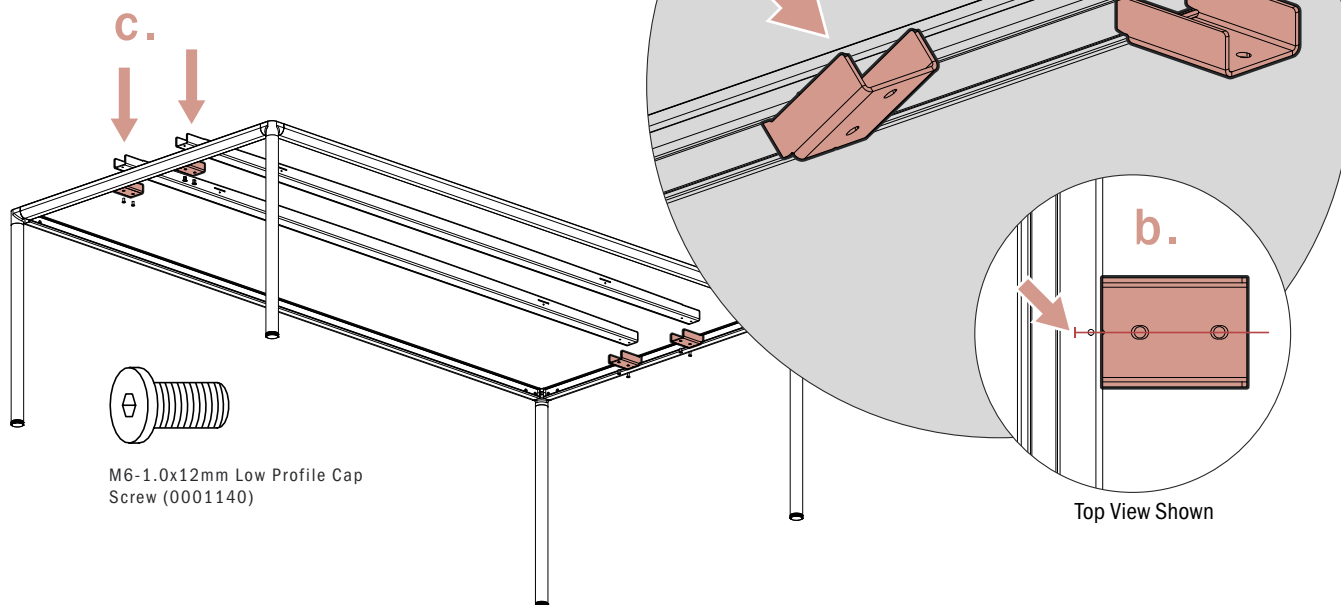


2. Attach Leg Assemblies to Long Frame Rails



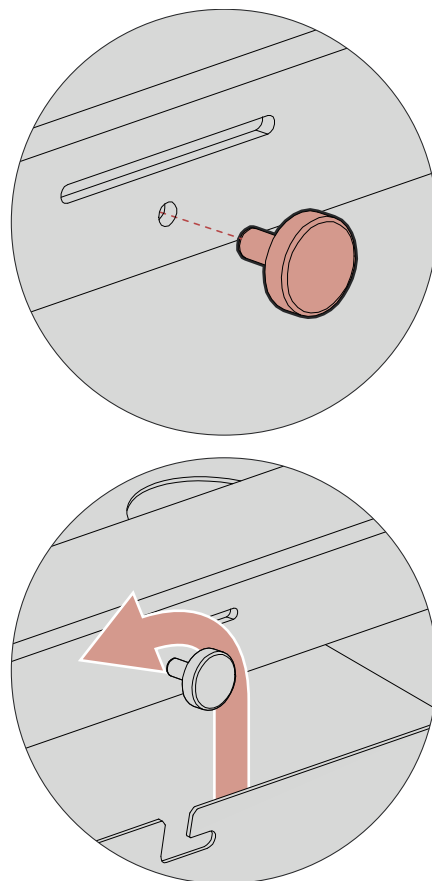
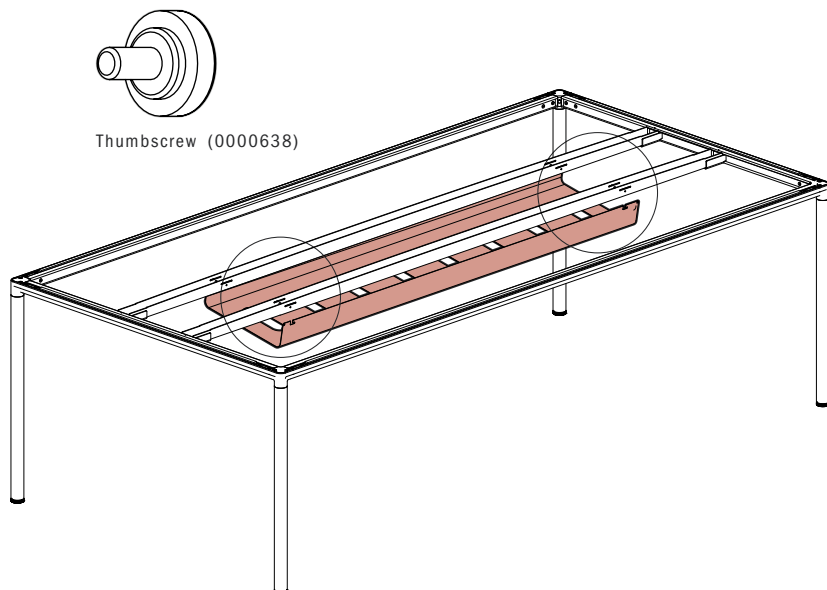
3. Position Support Rail Brackets and Install Support Rails

Rotate the support rail brackets into place along the frame rails. Position them such that the notch on the brackets line up with the indicator holes in the rails. Drop the support rails into place and secure them from below with 2 screws (0001140) in each end.



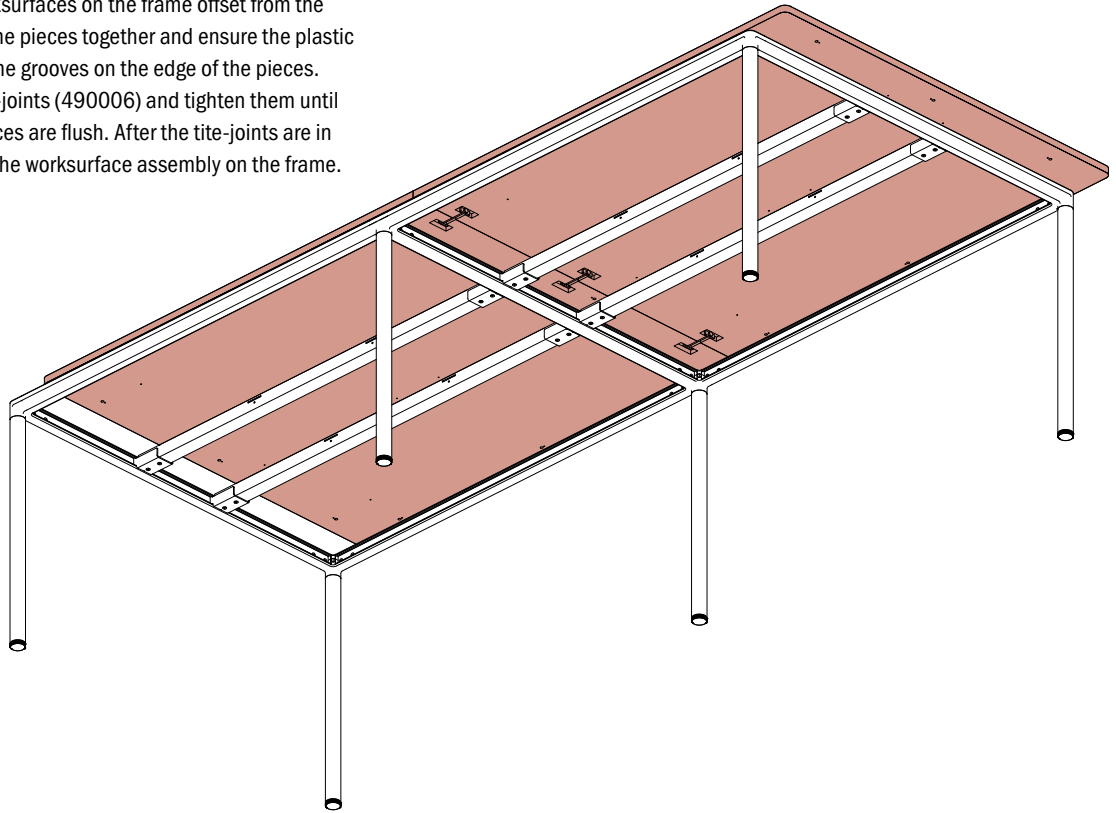
4. Hang the Cable Tray(s)

Loosely install the thumbscrews (0000638) on the outside of the support rail(s). For multi-piece tops, make sure all the thumbscrews installed in the support rails are on the same side. Hang the Cable Tray(s) by inserting the tabs into the slots in the opposite support rail. Swing the tray(s) up into place and move sideways until the thumbscrews are fully seated in the tray's keyslots. Tighten the thumbscrews.



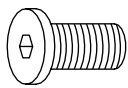
5. Connect the Worksurface Pieces (Multi-piece Tables Only)

Place the worksurfaces on the frame offset from the center. Push the pieces together and ensure the plastic spline sits in the grooves on the edge of the pieces. Install the tite-joints (490006) and tighten them until the worksurfaces are flush. After the tite-joints are in place, center the worksurface assembly on the frame.

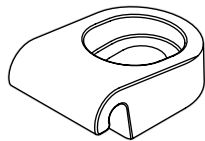


6. Attach the Worksurface(s)

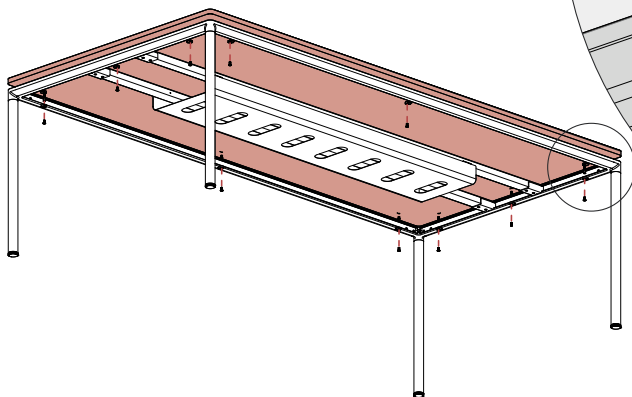
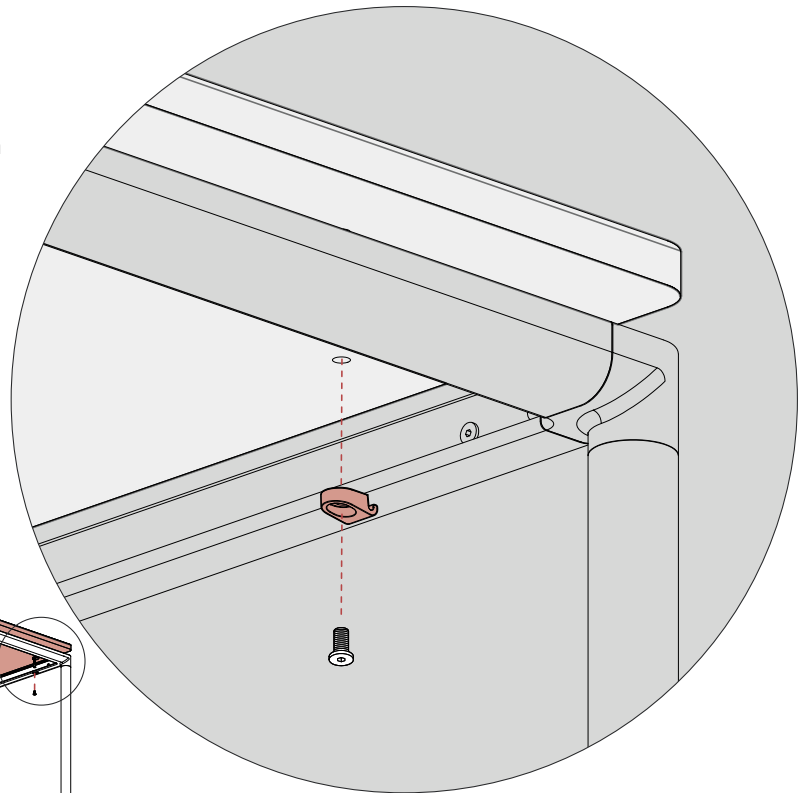
Align the worksurface(s) on the frame and ensure the spacing around the outside is consistent. Push the top clip (0001156) into the frame rail channel over one of the existing worksurface inserts. Attach a screw (0001140) through the top clip into the worksurface. Repeat for all clips.



M6-1.0x12mm Low
Profile Cap Screw
(0001140)



Top Clip (0001156)

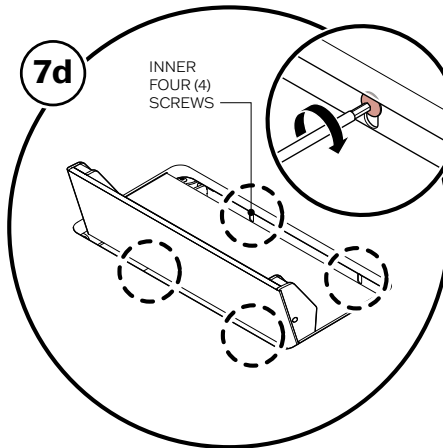
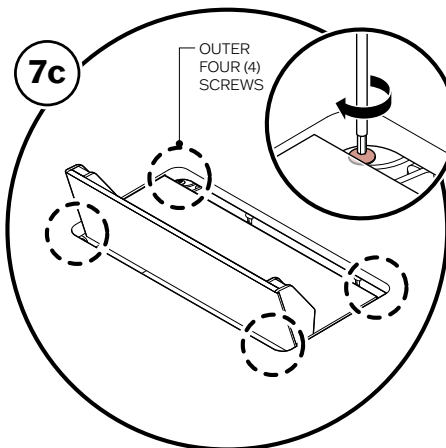
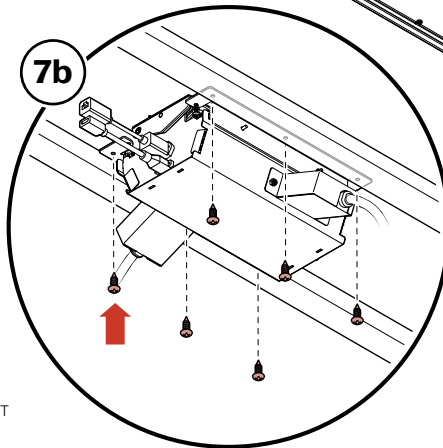
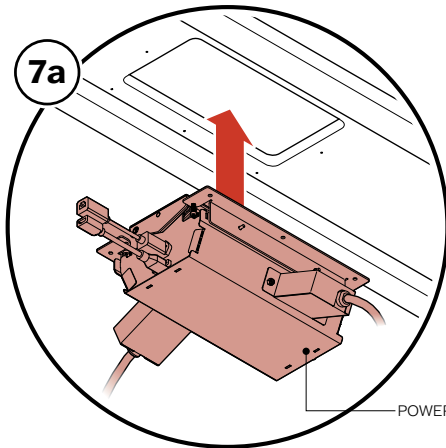


7. Attach the Power Unit to the Top (Optional)

Place Power Unit into the worksurface dado (7a) and loosely secure to underside of worksurface using six (6) screws (7b). Tighten the four (4) outer screws (7c) then tighten the four (4) inner screws (7d). Fully tighten the screws installed in steps 7a and 7b to secure Power Unit in place. If applicable, connect an HDMI or CAT6 data cable to the female/female adapters provided.



#10 x 1/3"
Philips Screw
(122815)

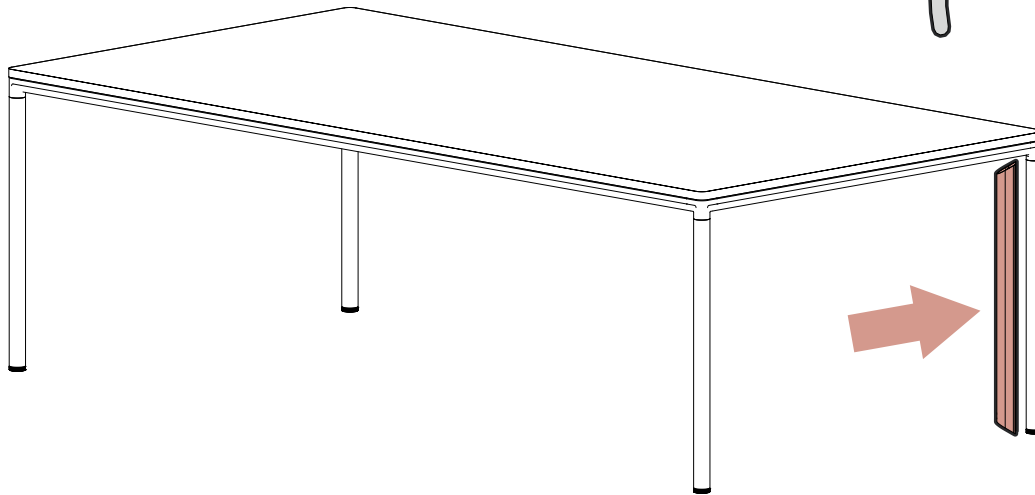
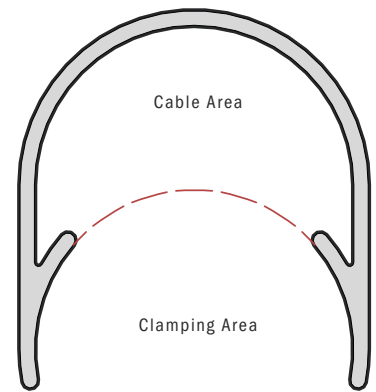


Cable Channel Assembly (Optional)

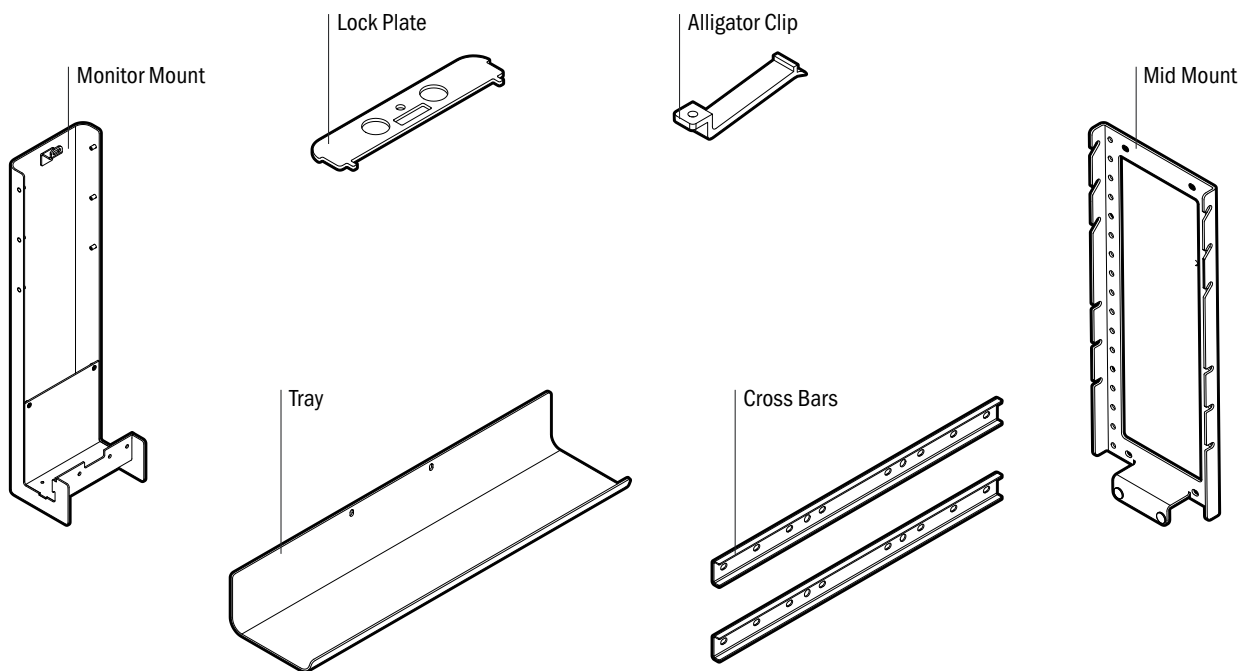
1. Attach Cable Channel

Arrange cables inside the cable channel and make sure the cords are contained in the “cable area”. Firmly press the cable channel onto the table leg.

Note: Watson Cable Tower assembly instructions are in a separate document



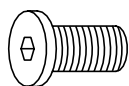
Monitor Mount Basic Components



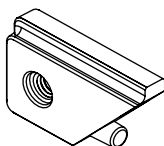
Hardware



M6-1.0 X 8MM Low
Profile Cap Screw
(0001259)



M6-1.0x12mm Low
Profile Cap Screw
(0001140)



Rail Nut (0001120)

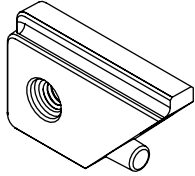


Hardware Kit Envelope
(0000909)

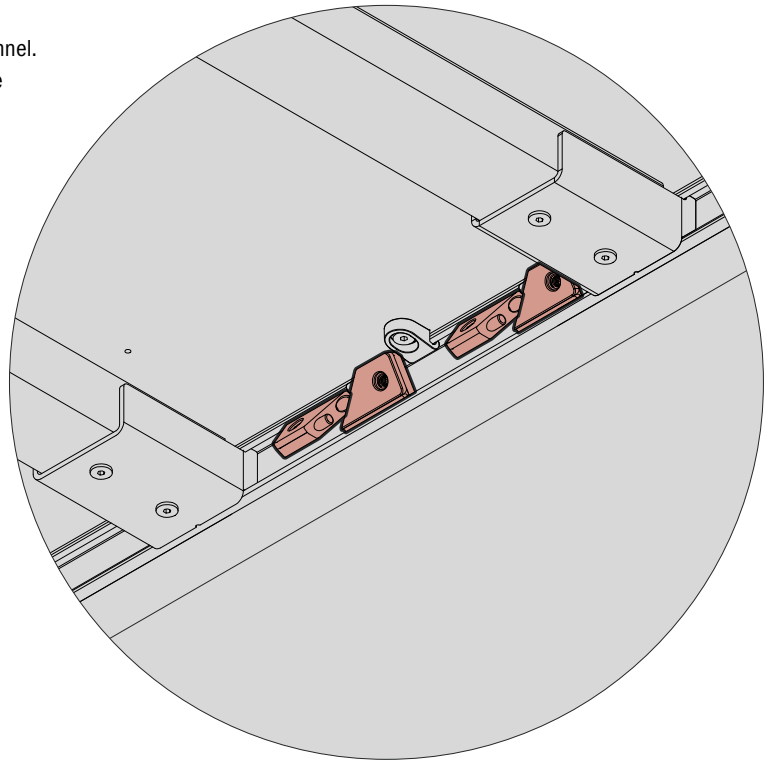
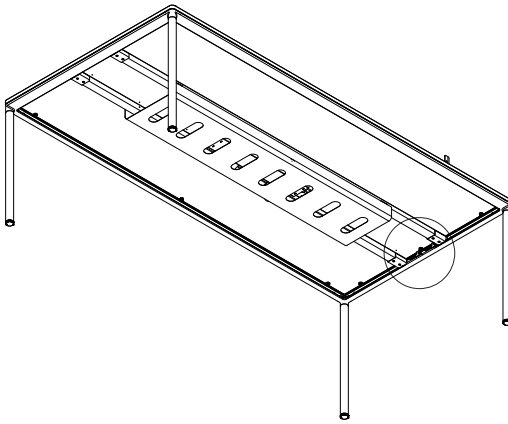
Monitor Mount Assembly

1. Position Rail Nuts

Rotate the rail nuts into place inside the frame rail channel. Firmly push them together until the angled surfaces are touching. Place two sets of rail nuts inside the rail.

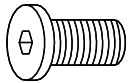


Rail Nut (0001120)

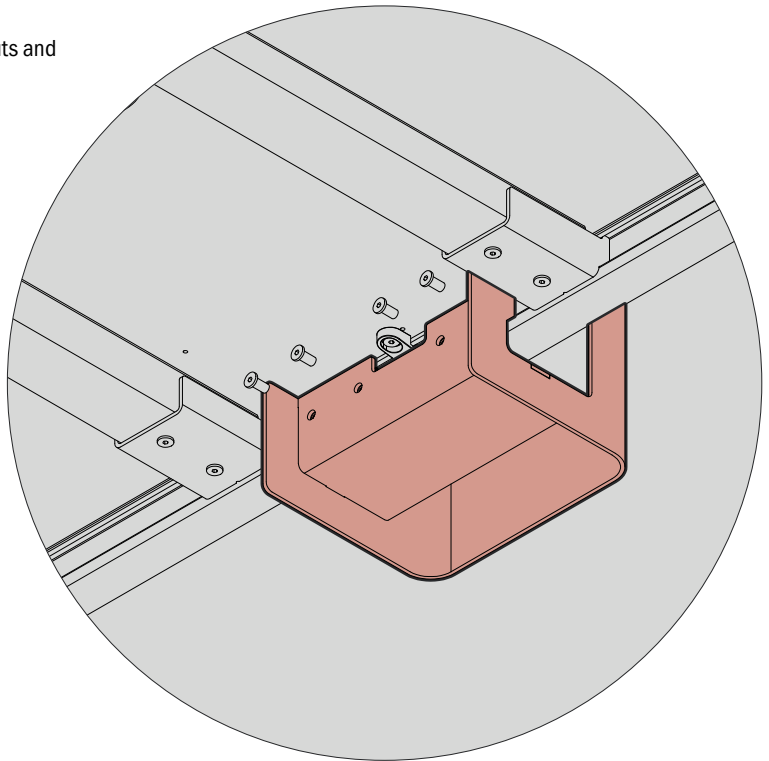
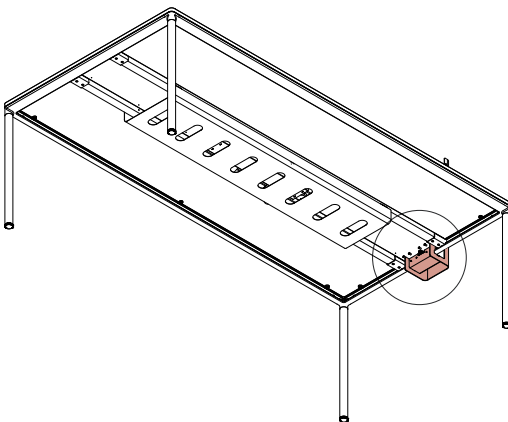


2. Attach Monitor Mount to Table

Align the Monitor Mount the with the holes in the rail nuts and attach with (4) screws (0001140).

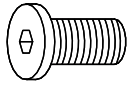


M6-1.0 x 12mm Low Profile
Cap Screw (0001140)

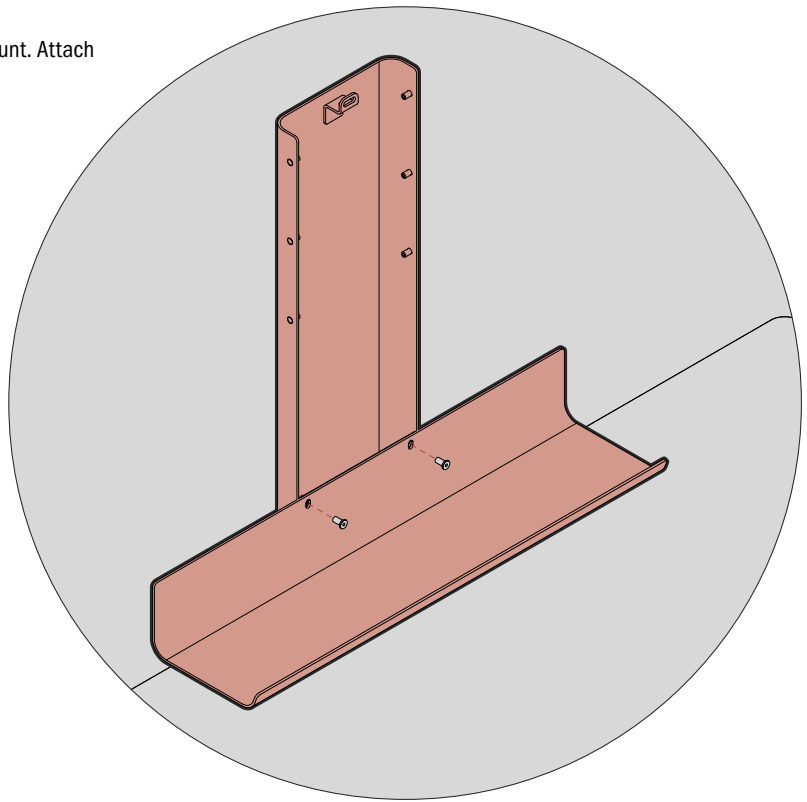
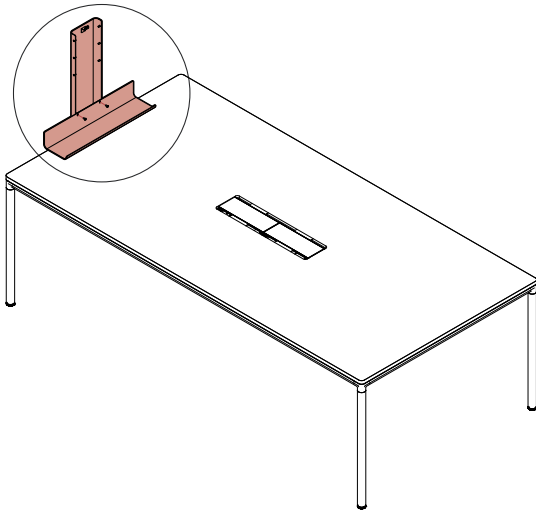


3. Attach Tray

Align slotted holes in Tray with holes in Monitor Mount. Attach with (2) 0001140 M6 x 12mm screws.



M6-1.0 x 12mm Low Profile
Cap Screw (0001140)

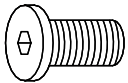


4. Attach Mid Mount and Cross Bars to TV

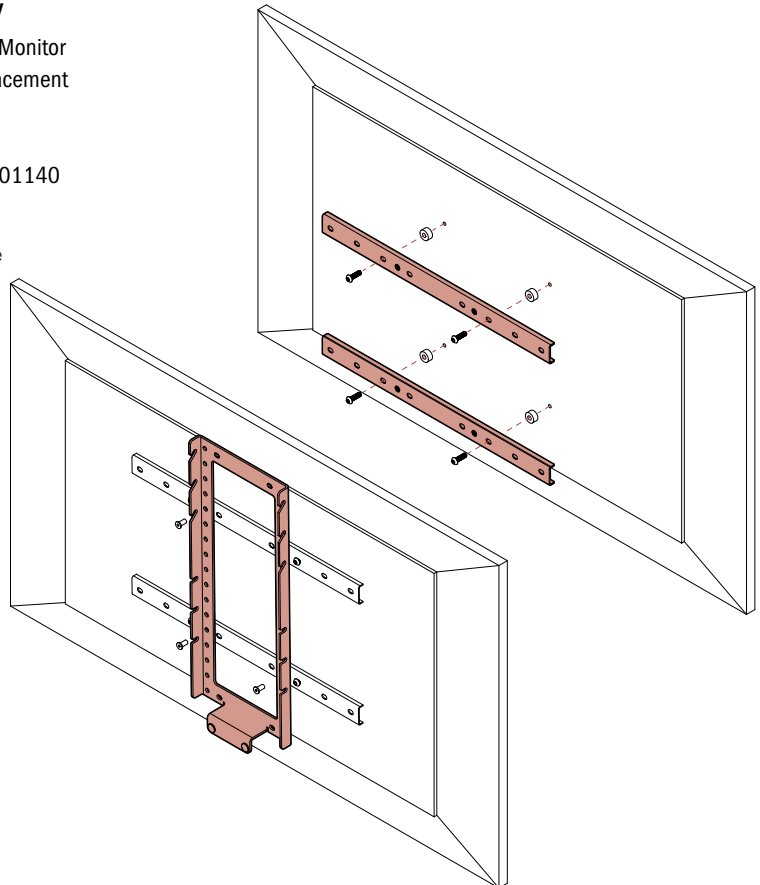
(A) Secure the Cross Bars to the back of the TV with the Monitor Mounting hardware kit. Specific hardware and screw placement will vary based upon TV brand.

(B) Next secure the Mid Mount to Cross Bars with (4) 0001140 M6 screws in the holes shown below.

Note: the ideal Monitor placement is 50mm gap from table surface to bottom of Monitor.



M6-1.0 x 12mm Low
Profile Cap Screw
(0001140)

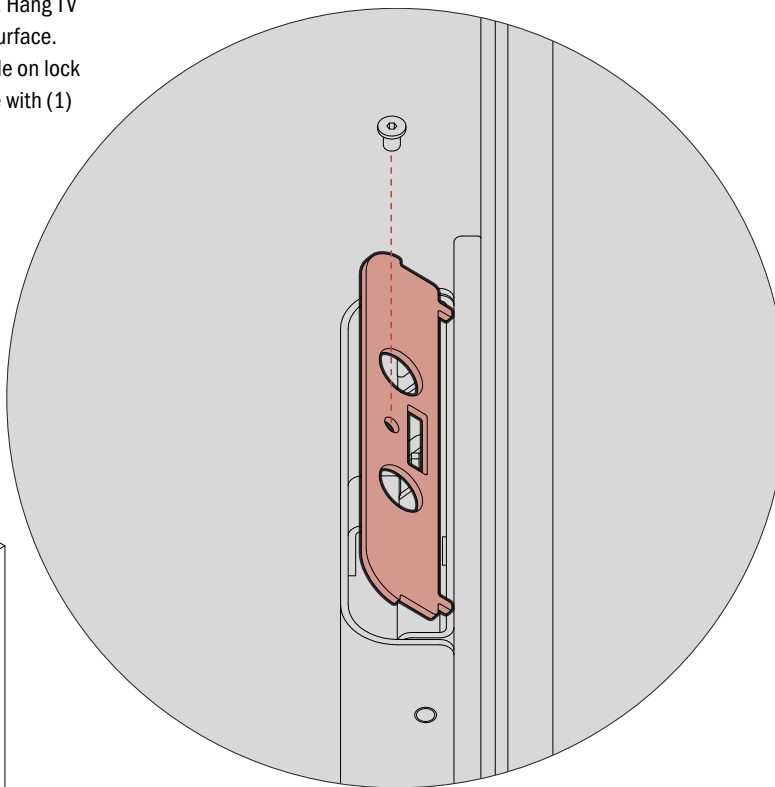
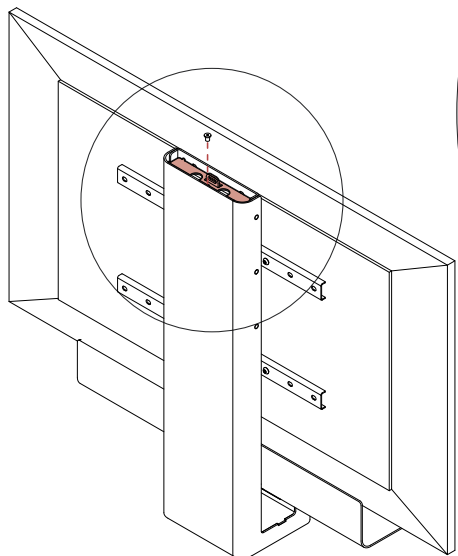


5. Mount and Secure TV

Route cables into Monitor Mount and out the bottom. Hang TV on Monitor Mount approximately 50mm above table surface. Rotate Lock Plate into top of Monitor Mount. Align hole on lock plate with hole on Monitor Mount lock tab and secure with (1) 0001259 M6 x 8mm screw.



M6-1.0 X 8MM Low Profile Cap Screw (0001259)

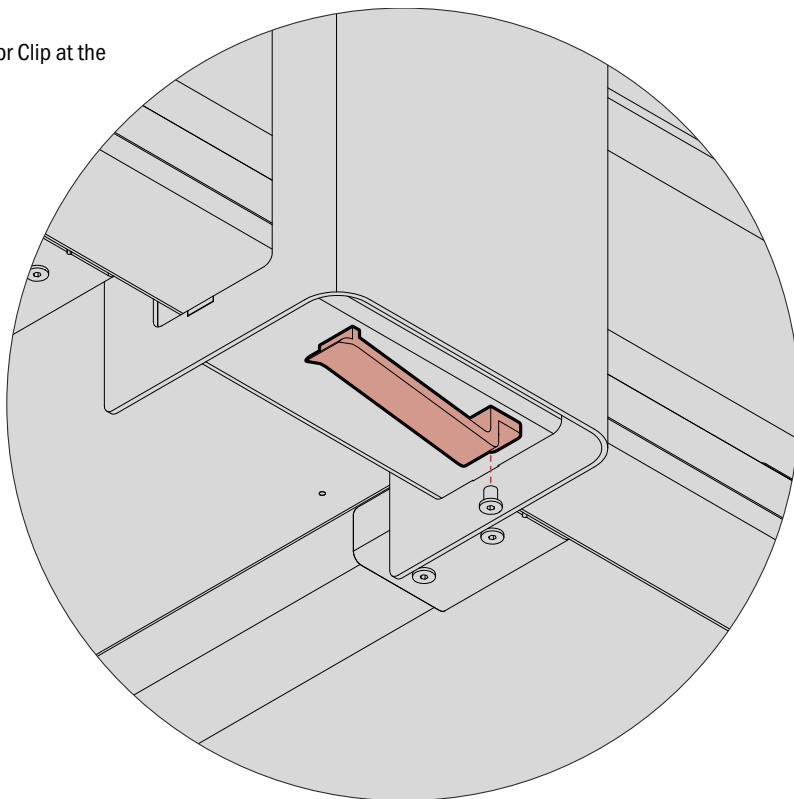
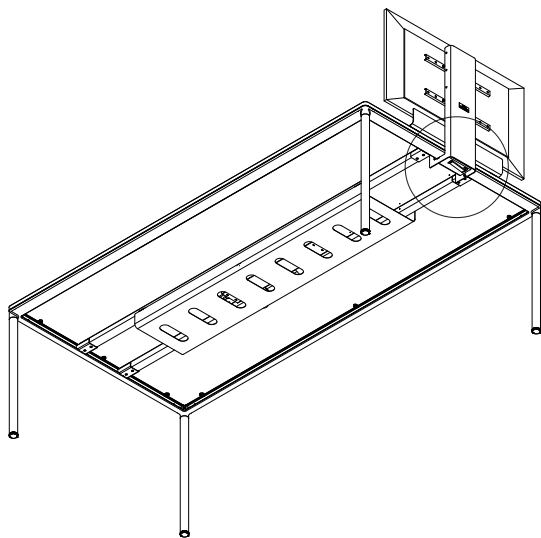


6. Install Alligator Clip

Using (1) 0001259 M6 x 8mm screw install Alligator Clip at the bottom of the Monitor Mount



M6-1.0 X 8MM Low Profile Cap Screw (0001259)



7. Additional Wiring

After the TV is mounted additional wiring can be routed into the Monitor Mount by pivoting the TV out. Push the bottom of the TV to rotate and route cables thru the Monitor Mount.

