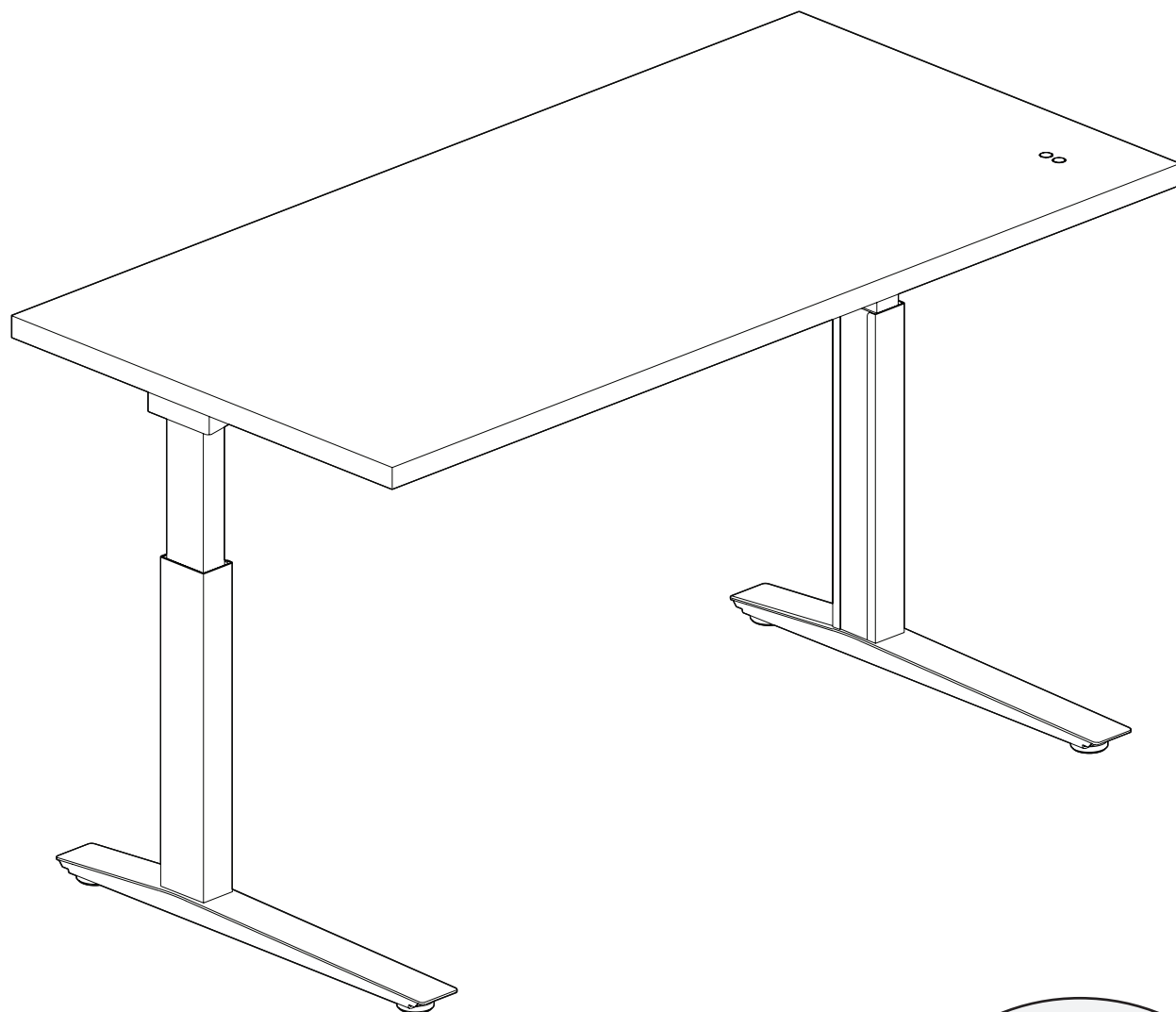


ASSEMBLY

Essential Two-Leg Desk



View Digitally

Important Safety Instructions

This product is for commercial use only.

Maximum intended load for this desk is 250 lbs (113 kg)

When using an electrical furnishing, basic precautions should always be followed, including the following:

Read all instructions before using (this furnishing).

DANGER -

To reduce the risk of electric shock:

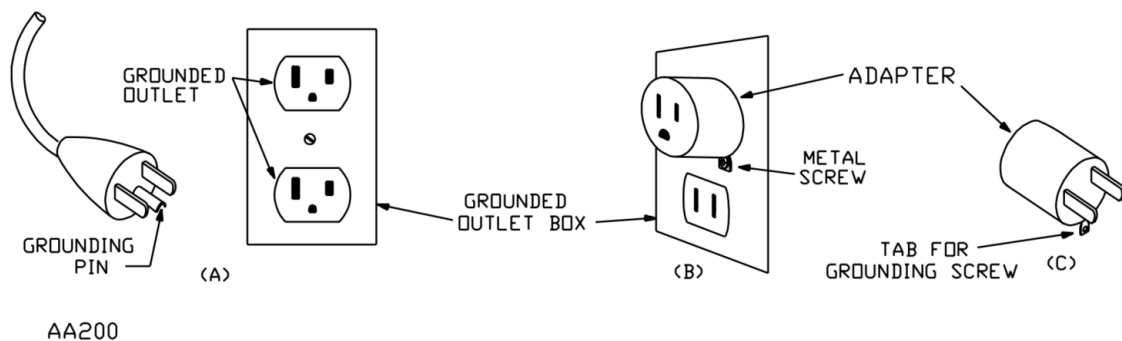
1. Always unplug this furnishing from the electrical outlet before cleaning.

WARNING -

To reduce the risk of burns, fire, electric shock, or injury to persons:

1. Unplug from outlet before putting on or taking off parts.
2. Close supervision is necessary when this furnishing is used by, or near children, invalids, or disabled persons.
3. Use this furnishing only for its intended use as described in these instructions. Do not use attachments not recommended by the manufacturer.
4. Never operate this furnishing if it has a damaged cord or plug, if it is not working properly, if it has been dropped or damaged, or dropped into water. Return the furnishing to a service center for examination and repair.
5. Keep the cord away from heated surfaces.
6. Do not use outdoors.
7. Do not operate where aerosol (spray) products are being used or where oxygen is being administered.
8. To disconnect, turn all controls to the off position, then remove the plug from outlet.
9. **WARNING: Risk of Electric Shock** – Connect this furnishing to a properly grounded outlet only. See Grounding Instructions (Figure 77.1).
10. Mount furnishings at the correct height.

Figure 77.1
Grounding methods




If Using Optional Utility Power -

1. The electrical desk plug must be plugged into the utility power when present.
2. This product is for use on a nominal 120-volt circuit and has a grounding plug that looks like the plug illustrated in sketch A (see Figure 77.1). Make sure that the product is connected to an outlet having the same configuration as the plug. No adapter should be used with this product.

Save These Instructions

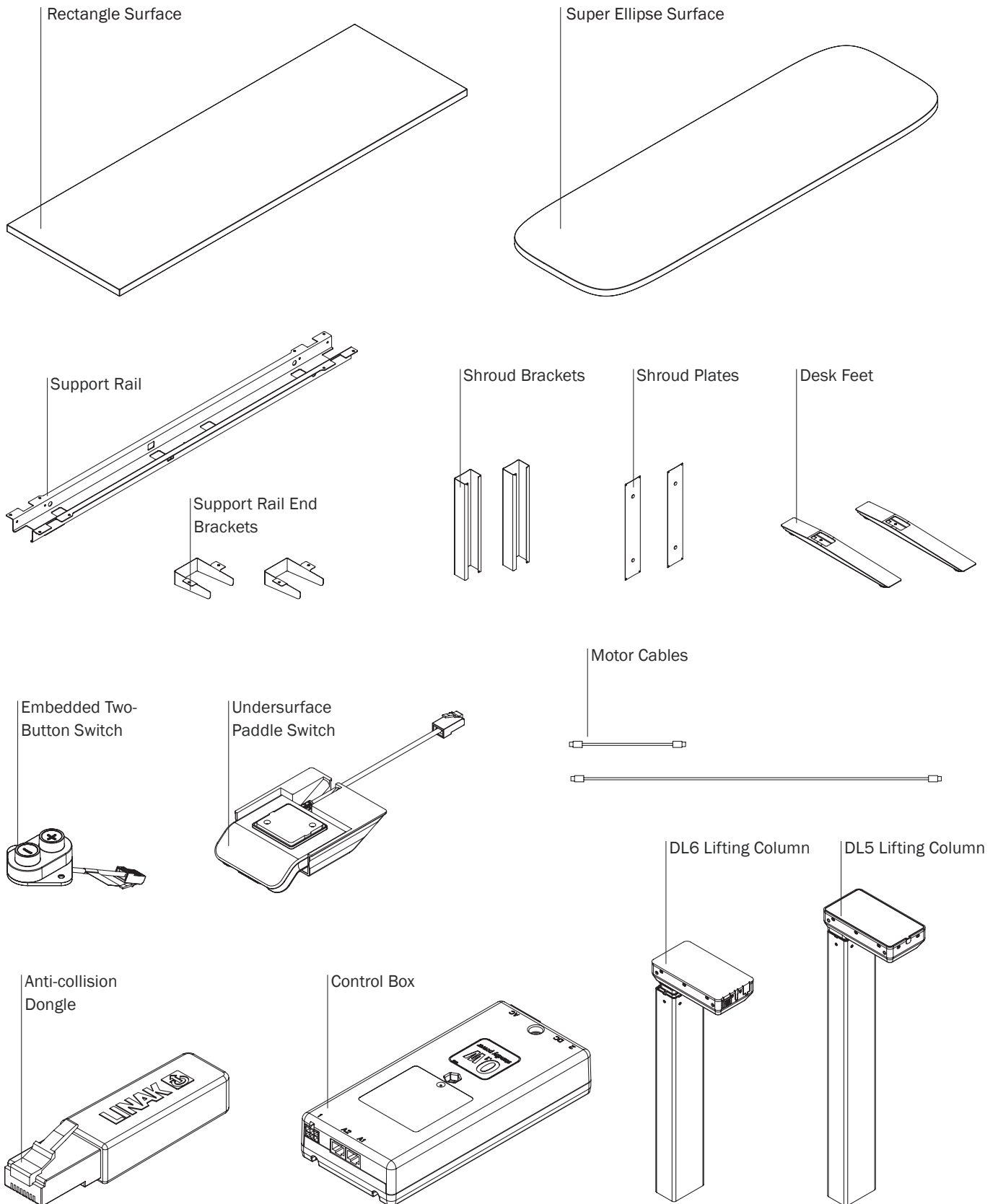
OPERATING INSTRUCTIONS – Please refer to the provided Installation Instructions and User Guide.

POLARIZED PLUG INSTRUCTIONS – To reduce the risk of electric shock, this furnishing has a polarized plug (one blade is wider than the other). This plug will fit in a polarized outlet only one way. If the plug does not fit fully in the outlet, reverse the plug. If it still does not fit, contact a qualified electrician to install the proper outlet. Do not change the plug in any way.

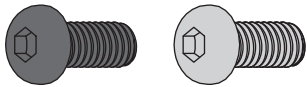
SERVICING OF DOUBLE-INSULATED PRODUCTS – In a double-insulated product, two systems of insulation are provided instead of grounding. No grounding means is provided on a double-insulated product, nor is a means for grounding to be added to the product. Servicing a double-insulated product requires extreme care and knowledge of the system, and is to be done only by qualified service personnel. Replacement parts for a double-insulated product must be identical to the parts they replace. A double-insulated product is marked with the words “DOUBLE INSULATION”, “DOUBLE INSULATED”, or .

This product is for use on a nominal 120-V circuit. Make sure that the product is connected to an outlet having the same configuration as the plug. No adapter should be used with this product.

Essential Two-Leg Desk Components



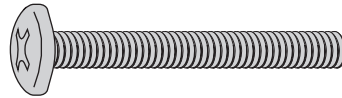
Hardware



M6-1.0 X 12MM Button Head Screw, Black or Zinc dependent on desk color (125285/125290)



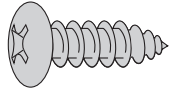
M6-1.0 Nylock Nut, Zinc (888152)



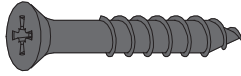
M6-1.0 X 40MM Button Head Screw, Zinc (125293)



#8 X 1/2 Pan Head Screw, Black (127000)



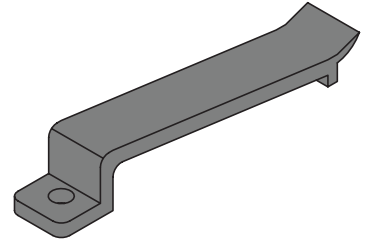
#10 X 5/8 Pan Head Screw, Zinc (122800)



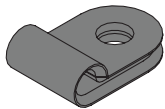
#8 X 1-1/4 Flat Head Screw, Black (122805)



#8 X 5/8 Flat Head Screw, Black (116754)

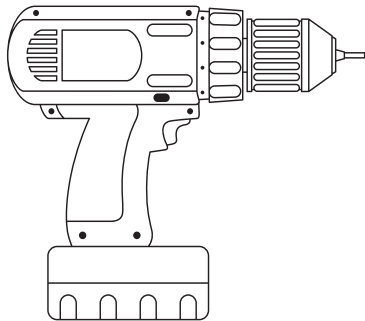


Cable Clips (486911)



Switch Cable Clip (038000)

Tools



Electric Drill



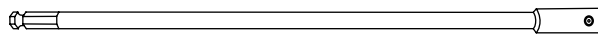
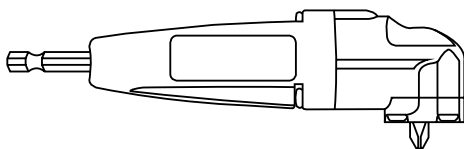
Phillips Drill/Driver Bit



4mm Hex Drill/Driver Bit



3mm Hex Drill/Driver Bit

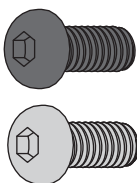


Additional tools such as a 90 Degree Bit and an 18" Extension are helpful for some steps

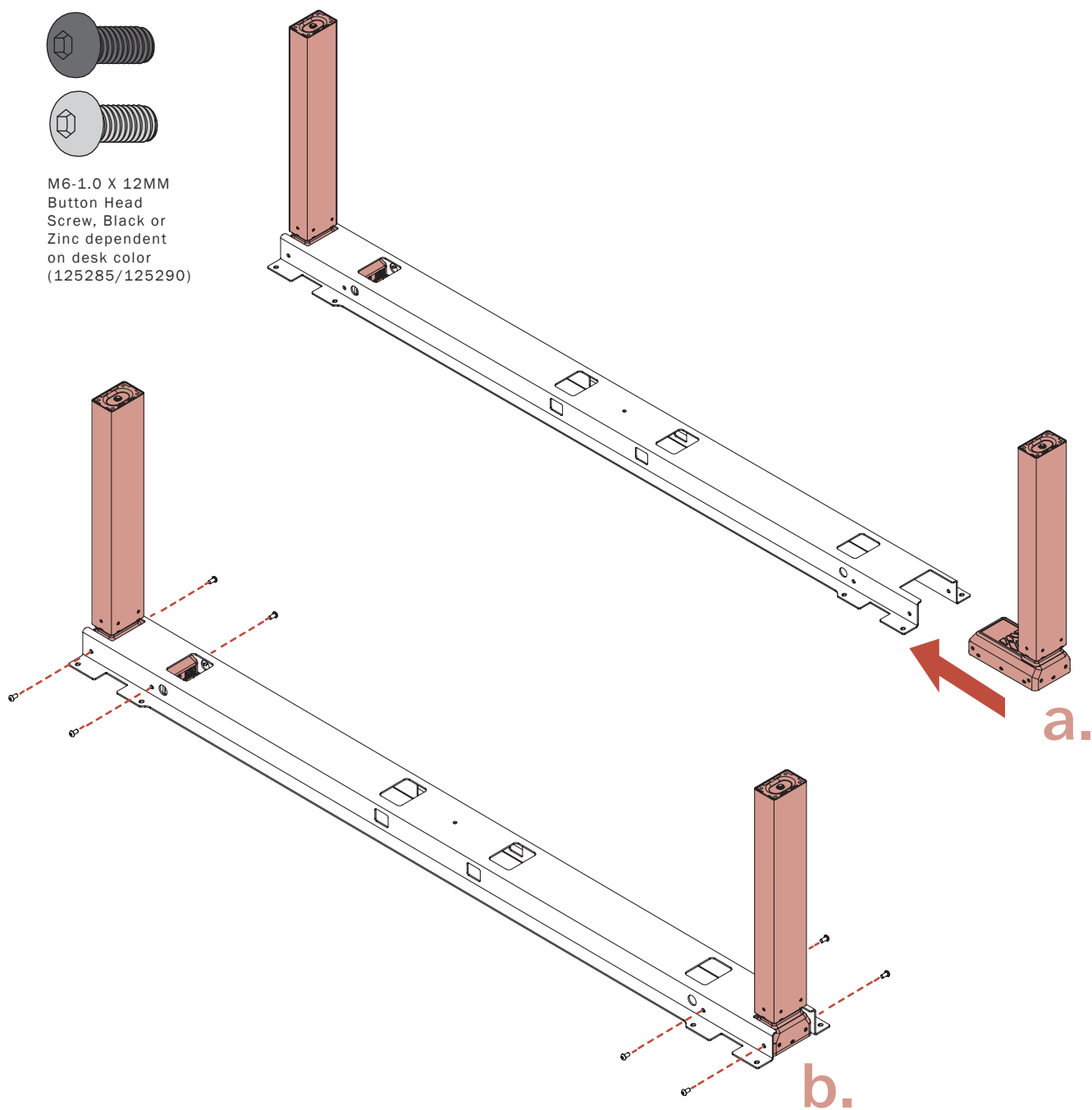
*No torque or ball bits should be used

1. Attach Support Rail to Desk Legs

Place support rail top down on a clean blanket or carpet that is free of debris. Slide lifting columns into the ends of the support rail as shown (a.). Attach legs with (8) button head screws, (2) on each side of each leg (b.).

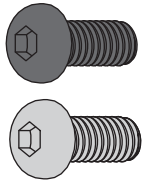


M6-1.0 X 12MM
Button Head
Screw, Black or
Zinc dependent
on desk color
(125285/125290)

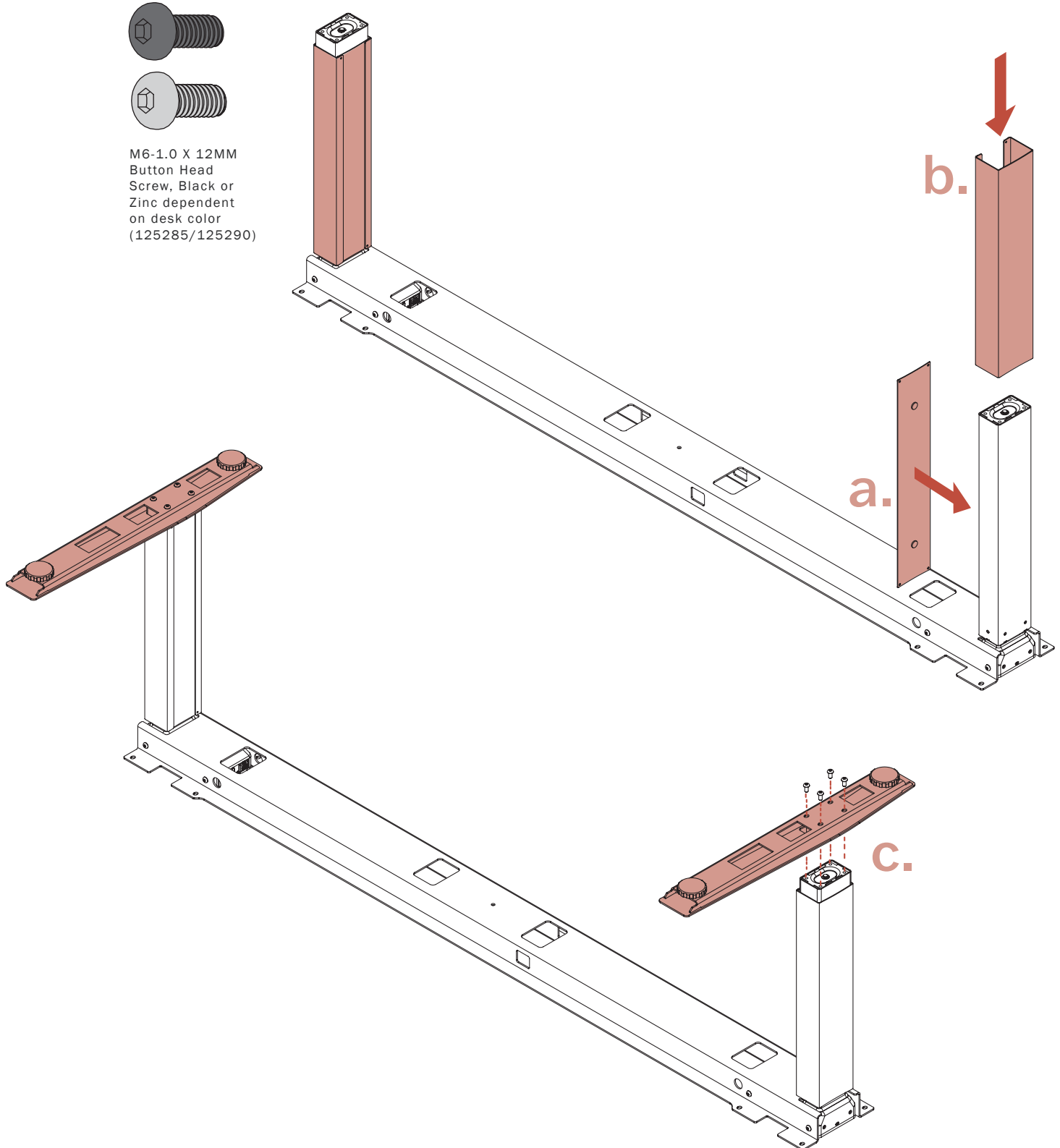


2. Attach Shrouds & Desk Feet

Some desk leg finishes require a steel shroud. If a shroud is included, hold the padded side of the shroud plates against the inner face of the lifting columns (a.) and slide the shroud brackets over the lifting columns and plates (b.). Secure each foot to the lifting columns with (4) button head screws per leg (c.).

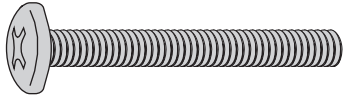


M6-1.0 X 12MM
Button Head
Screw, Black or
Zinc dependent
on desk color
(125285/125290)



3. Control Box Assembly

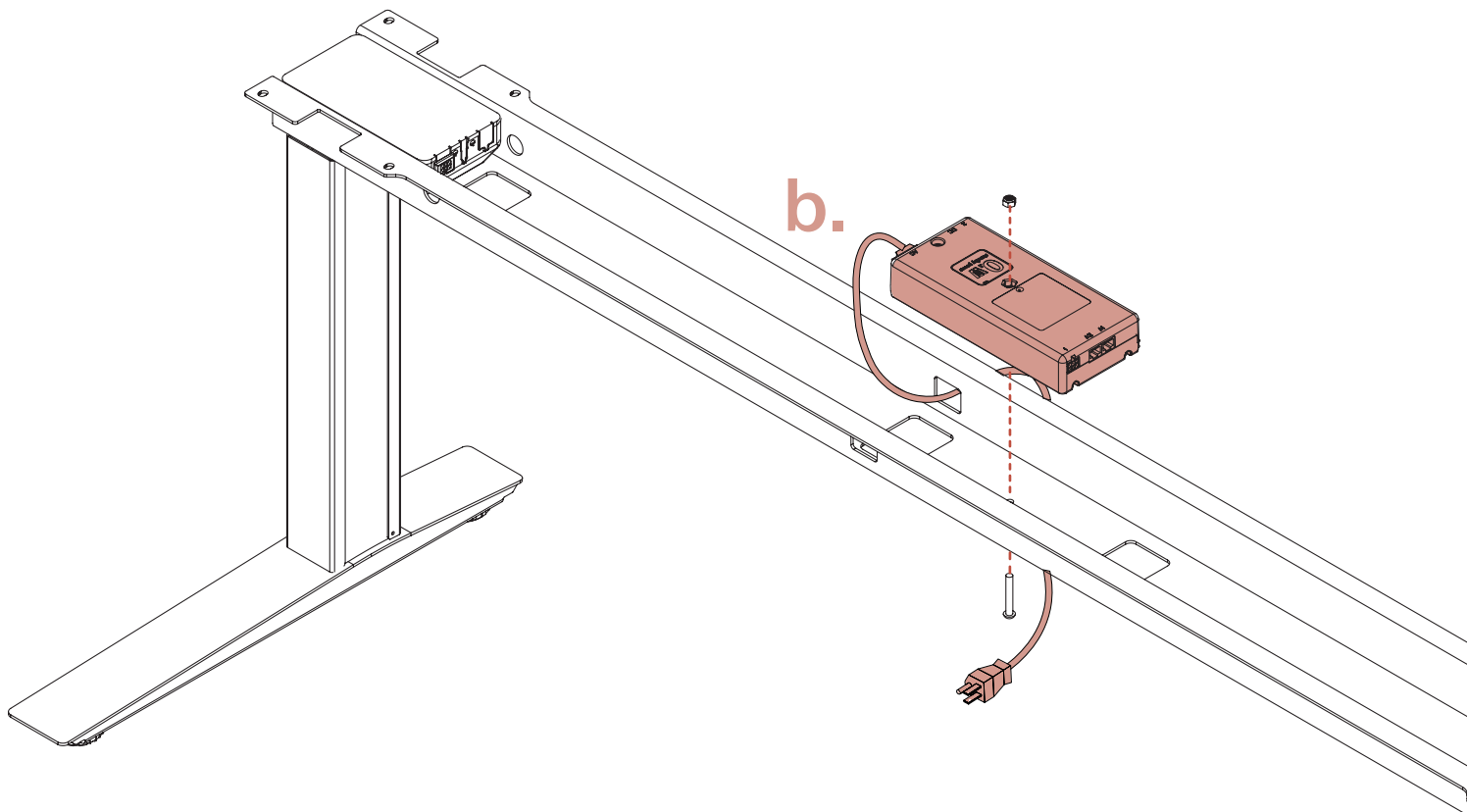
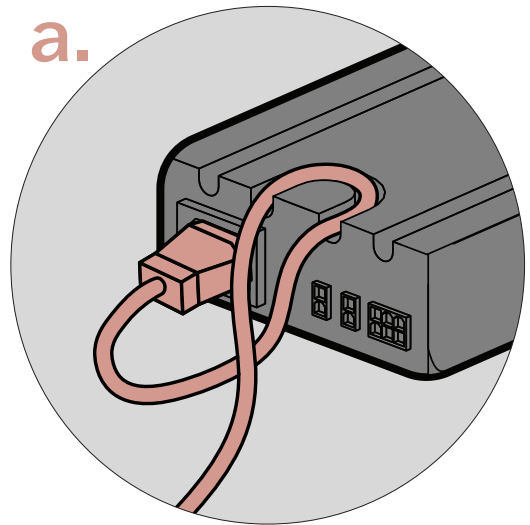
Plug the power cable into the control box, and route power cord through the strain relief channel on the underside of the control box (a.). Place the assembly centered on the support rail, and route the power cable through the rear cutout in the support rail, as shown. Then secure control box in place with M6 Nylock nut and M6x40mm button head screw (b.).



M6-1.0 X 40MM
Button Head Screw,
Zinc (125293)



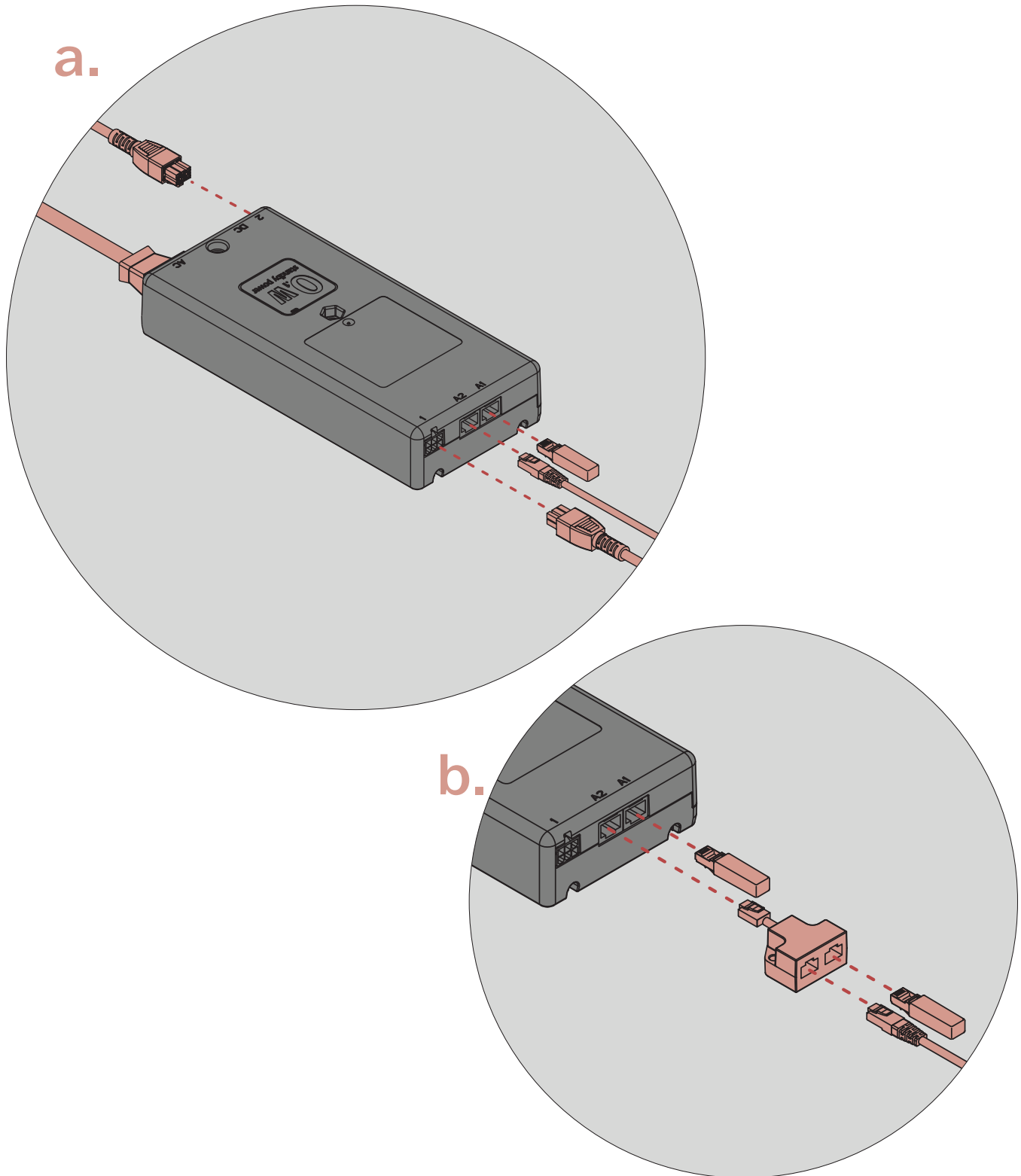
M6-1.0 Nylock Nut,
Zinc (888152)



4. Control Box Wiring Diagrams

After securing the control box to the support rail, plug in lifting column power cables into ports 1 & 2, and the Anti-Collision Dongle into port A1. Feed switch cable through the support rail cutout and plug into port A2 (a.). **Detailed steps for switches steps 5 & 6.*

If the customer specified the Bluetooth Add-On for desk operation, plug the splitter into port A2, and plug the switch cable and the Bluetooth Add-On into the splitter. Plug the anti-collision dongle into port A1 (b.).



Switch Assembly

There are two switch options, dependent on what the customer ordered: a two-button embedded switch, and an undersurface paddle switch.

5. ~~Two-Button~~ Embedded Switch

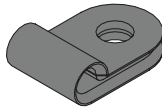
Route the switch cable through the outside of the round cutout in the support rail and plug into the control box (a.). Insert the switch assembly into the cutout on the underside of the surface and secure to the surface using (2) flat head screws (b.). Then flip the base assembly over onto the desk surface, lining it up with the brass inserts. If using the Bluetooth Add-On see step 4 for detailed instructions. Secure switch cable to surface using (2) switch cable clips and (2) pan head screws.



#8 X 5/8 Flat Head Screw, Black (116754)

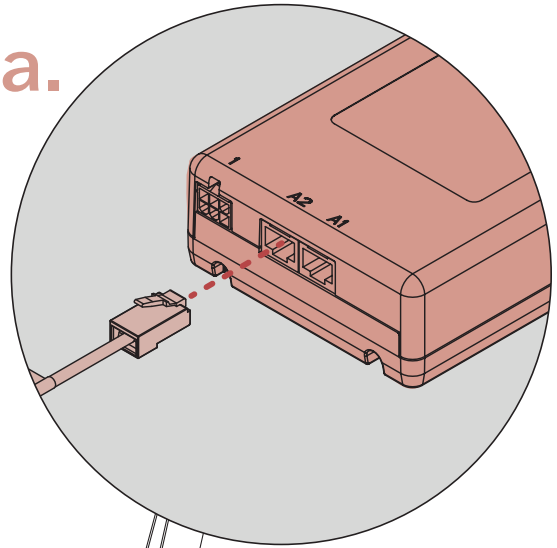


#8 X 1/2 Pan Head Screw, Black (127000)

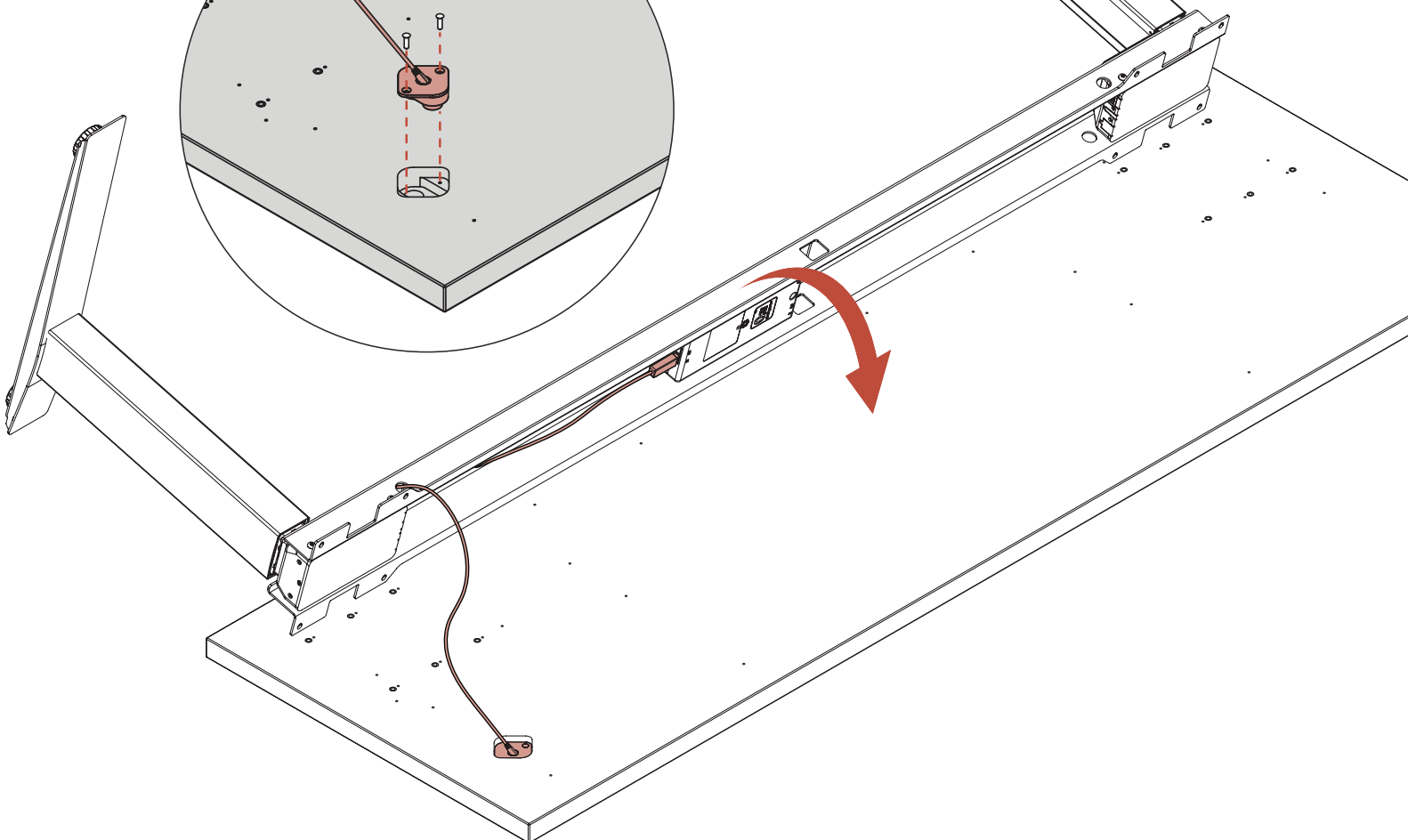
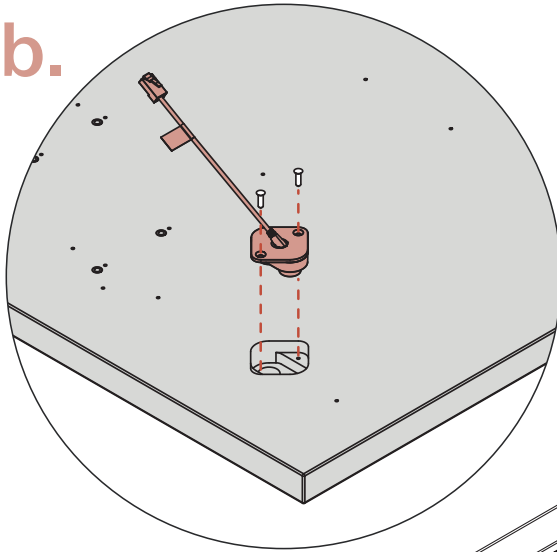


Switch Cable Clip (038000)

a.

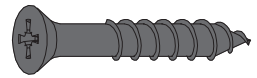


b.

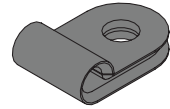


6. Undersurface Paddle Switch Assembly

Feed the switch cable through the cutout in the support rail and connect it to the control box (a.). Flip the base assembly over onto the surface, as shown in Step 4. Secure the undersurface paddle switch to the pilot holes on the underside of the surface with (2) flat head screws (b.). Attach (2) cable clips to surface using (2) #8 X 1/2 screws securing cable to surface (c.).



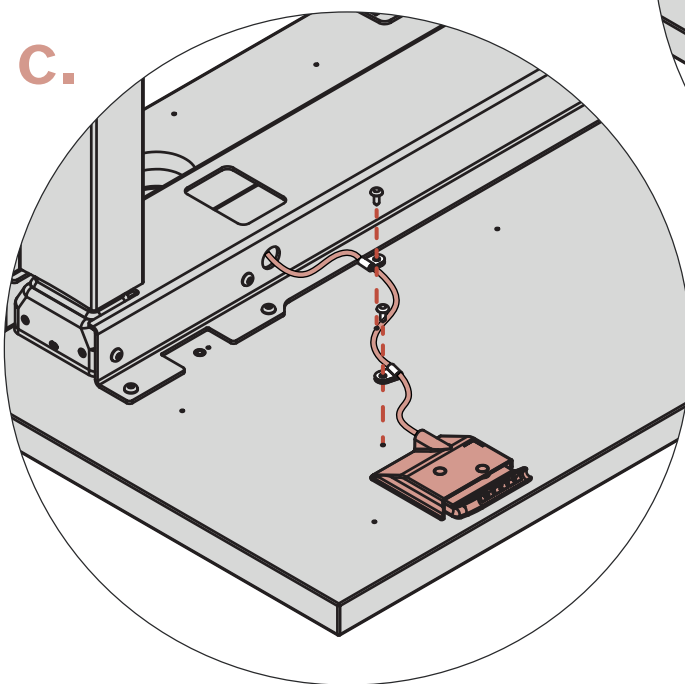
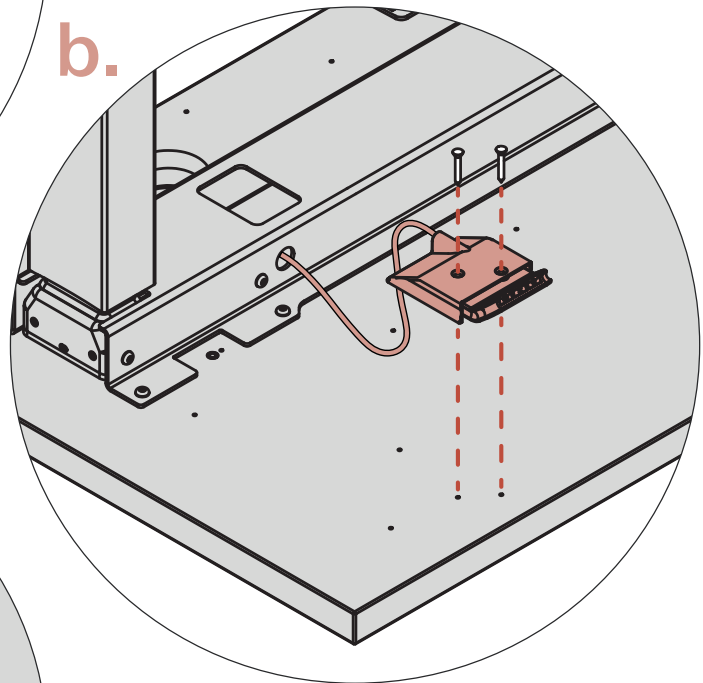
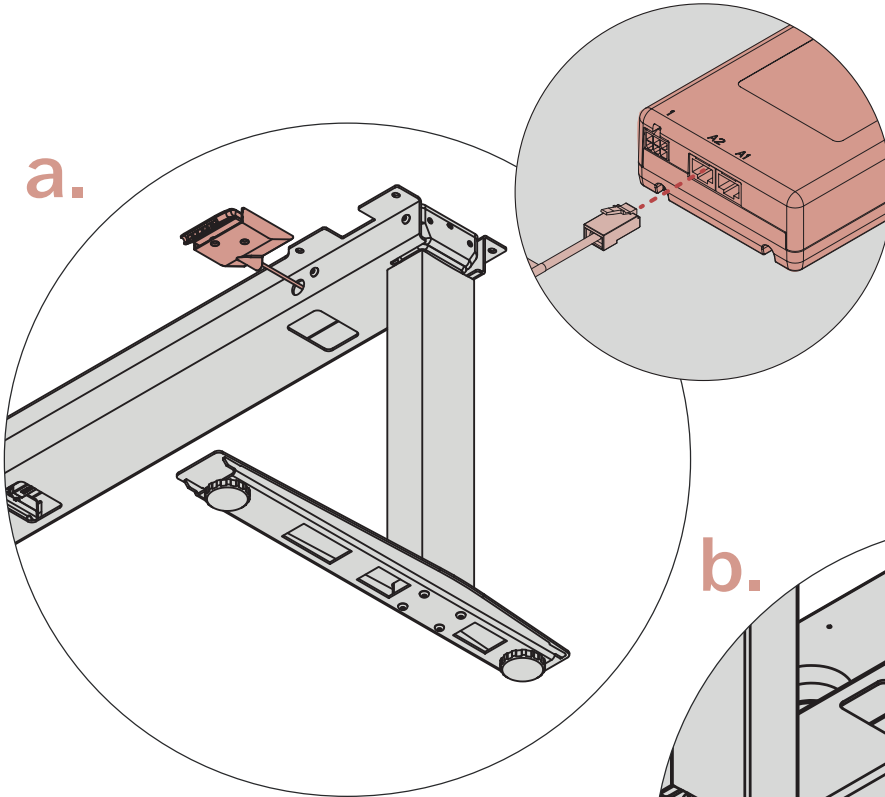
#8 X 1-1/4 Flat Head Screw, Black (122805)



Switch Cable Clip (038000)

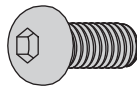
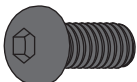


#8 X 1/2 Pan Head Screw, Black (127000)

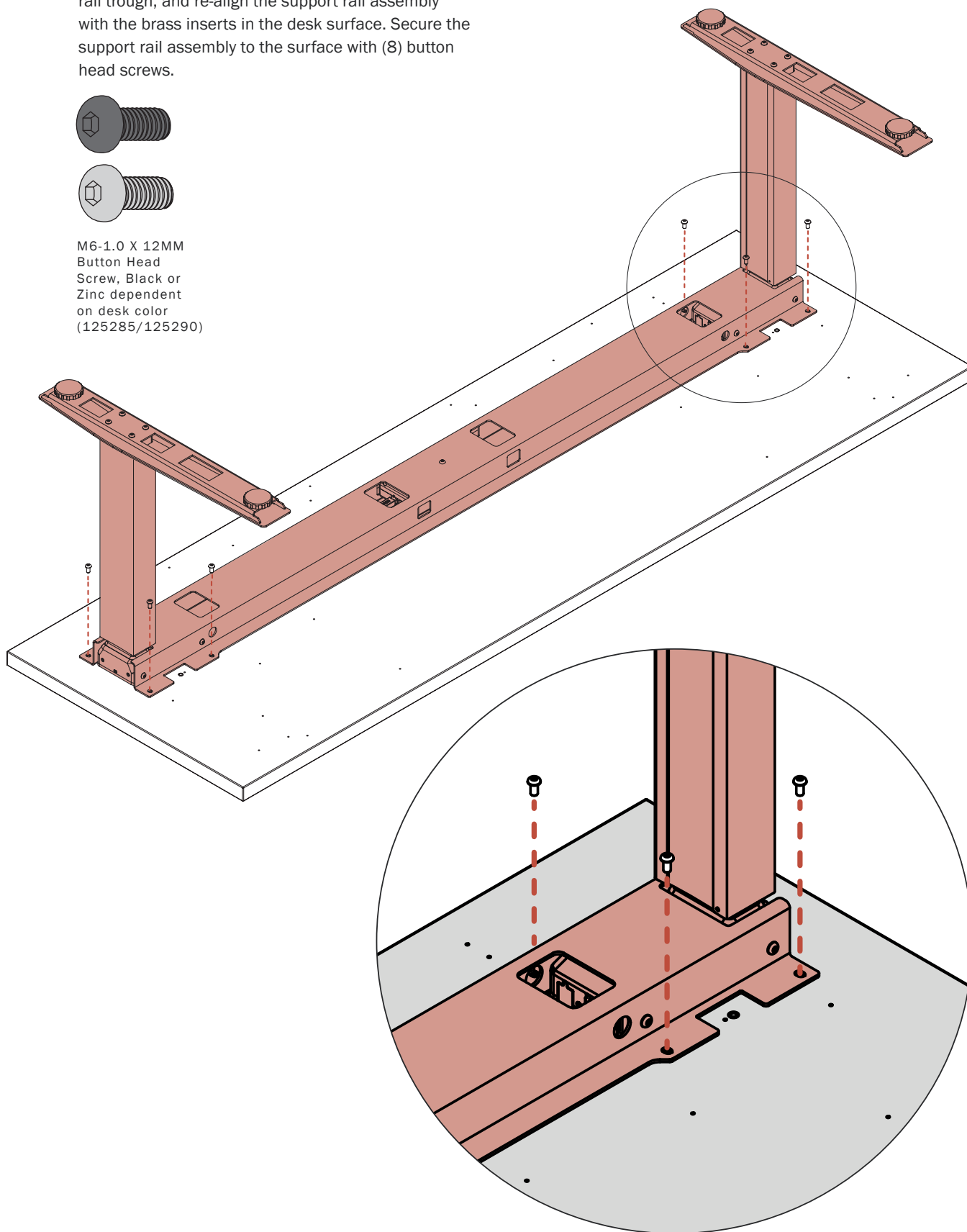


7. Secure Desk Base to Surface

After all cables are plugged into their correct ports in the control box, coil any excess cable in the support rail trough, and re-align the support rail assembly with the brass inserts in the desk surface. Secure the support rail assembly to the surface with (8) button head screws.

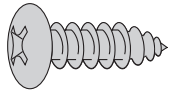


M6-1.0 X 12MM
Button Head
Screw, Black or
Zinc dependent
on desk color
(125285/125290)

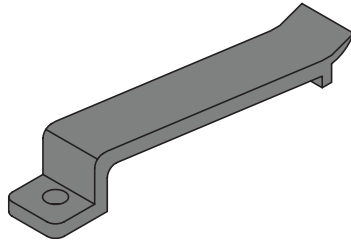


8. Attach Cable Management

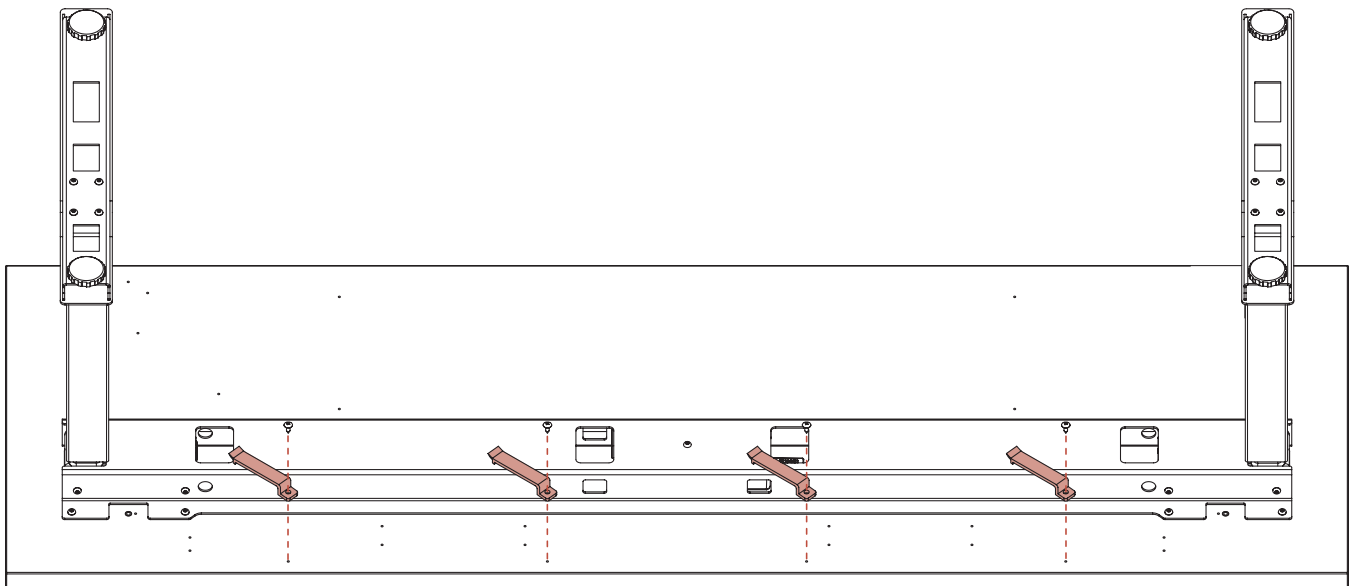
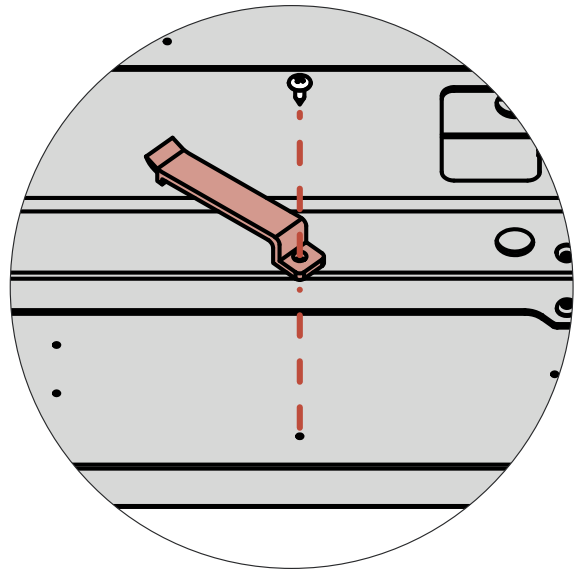
Attach wire management clips with (1) panhead screw per clip, into their designated pilot hole.



#10 X 5/8 Pan
Head Screw, Zinc
(122800)

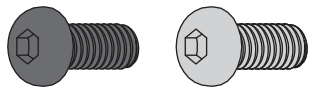


Cable Clips
(486911)

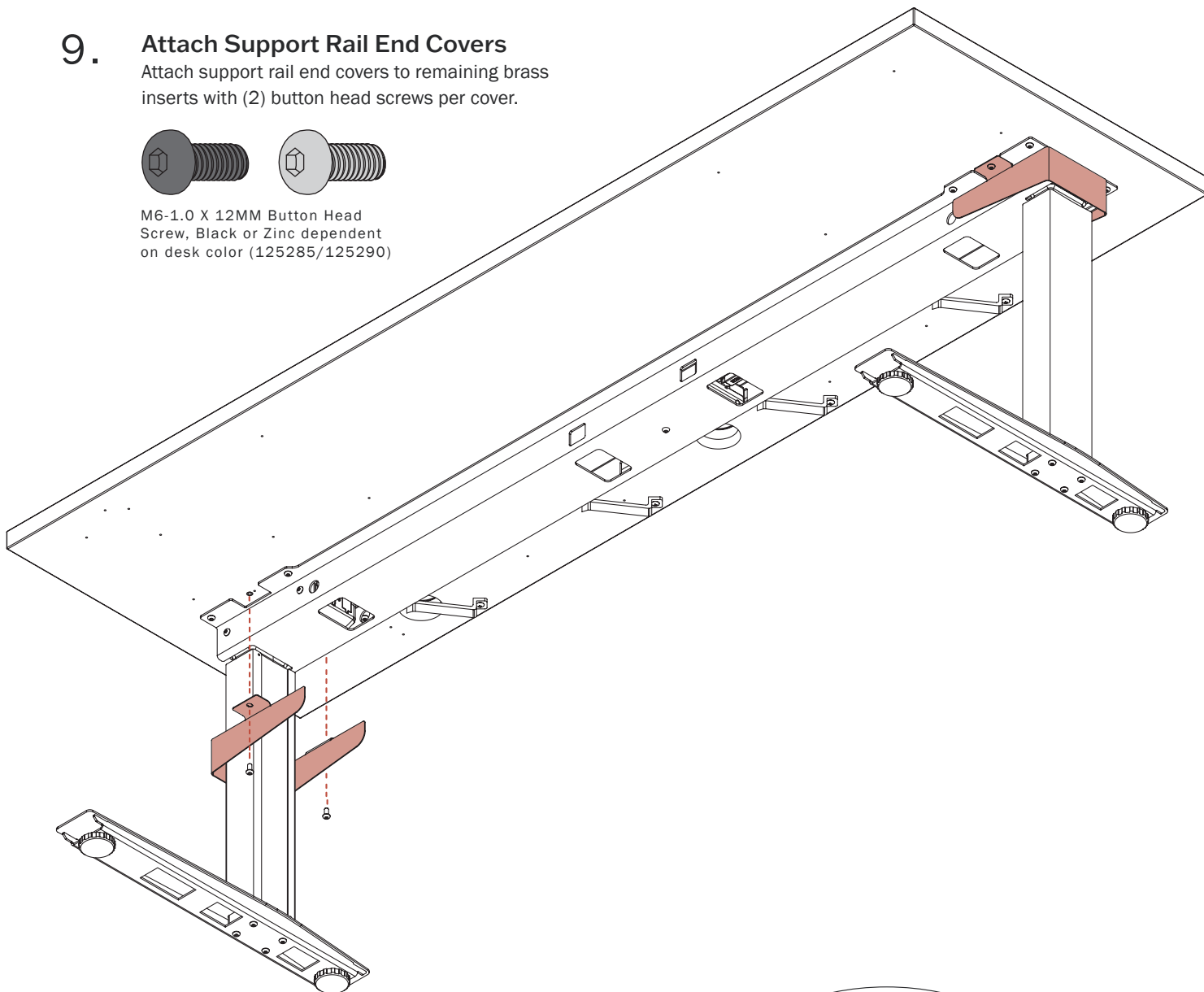


9. Attach Support Rail End Covers

Attach support rail end covers to remaining brass inserts with (2) button head screws per cover.



M6-1.0 X 12MM Button Head Screw, Black or Zinc dependent on desk color (125285/125290)



10. Power Test & Leveling

Plug power cord into 110V AC receptacle and depress the down arrow once to initialize desk. The desk will travel down a fraction of an inch then stop. The desk is now ready to travel up and down using the switch. Place the desk in the workstation setting maintaining a minimum 1" gap to surroundings per ANSI/BIFMA safety standards. Adjust leveling glides to ensure a stable sit/stand performance.

