

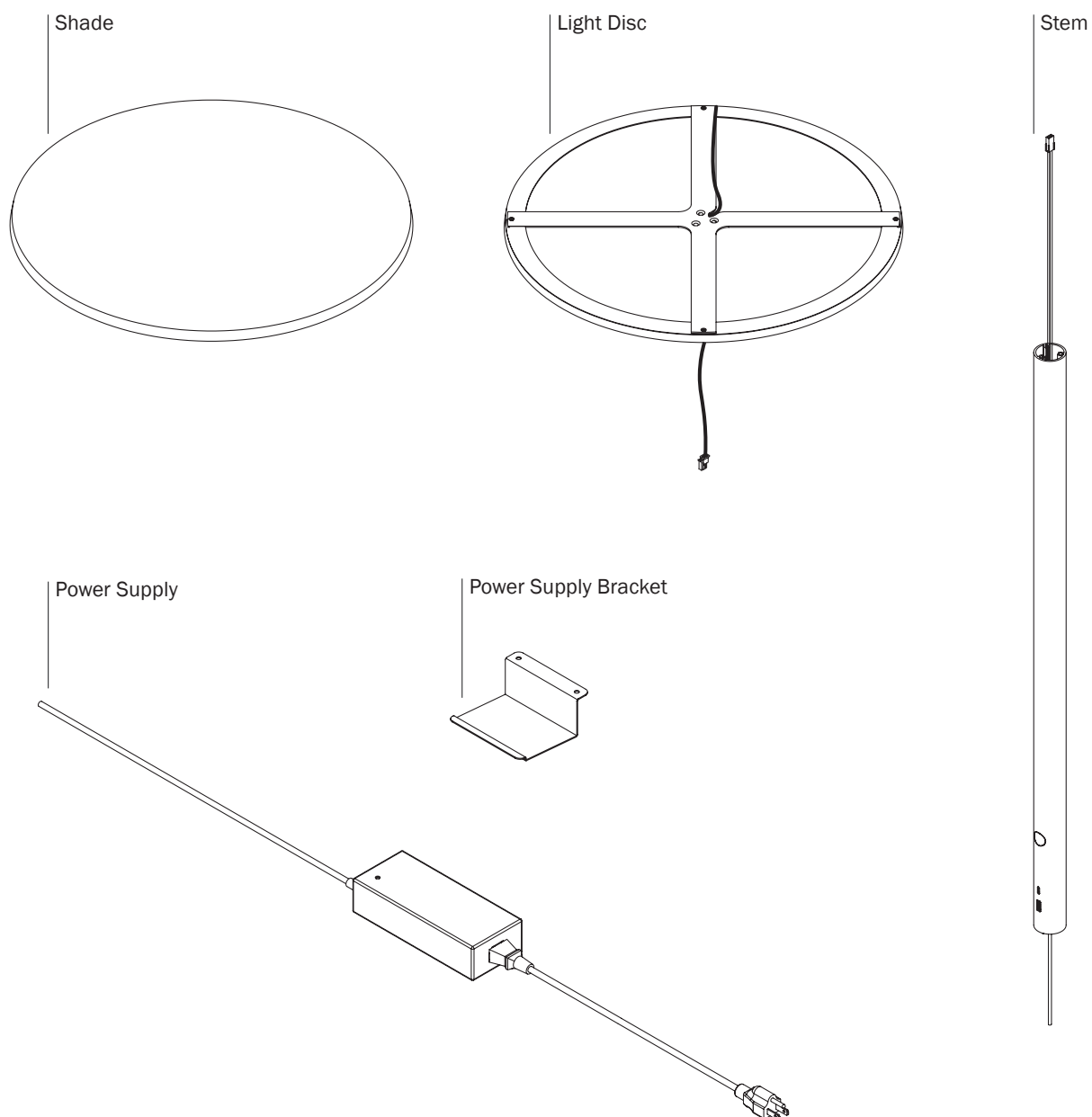
# ASSEMBLY

## Haven Neighborhood Light

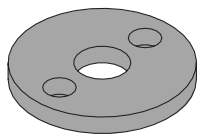


View Digitally

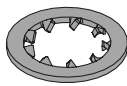
# Neighborhood Light Components



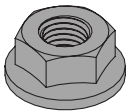
# Hardware



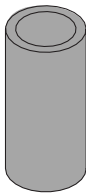
Mounting Washer



Locking Washer



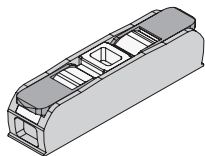
Mounting Nut



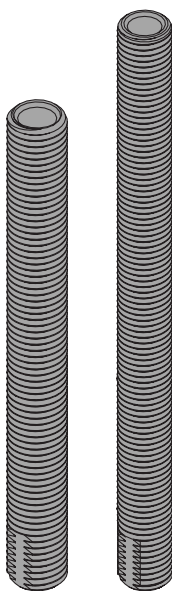
Spacer (used only for the bench assembly)



Thread Cutting Screw  
M4 X 12mm



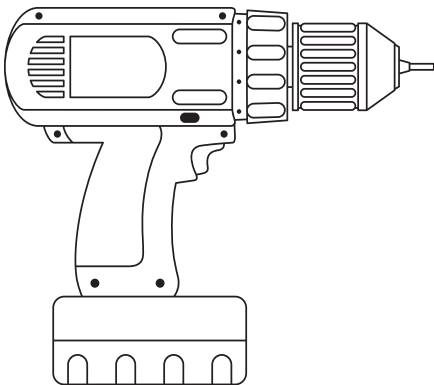
Wire Splice Connector



Light Rod 60mm  
(used for bench and table surface only)

Light Rod 100mm  
(used for rail assembly only)

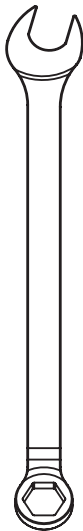
# Tools



Electric Drill



Phillips Bit



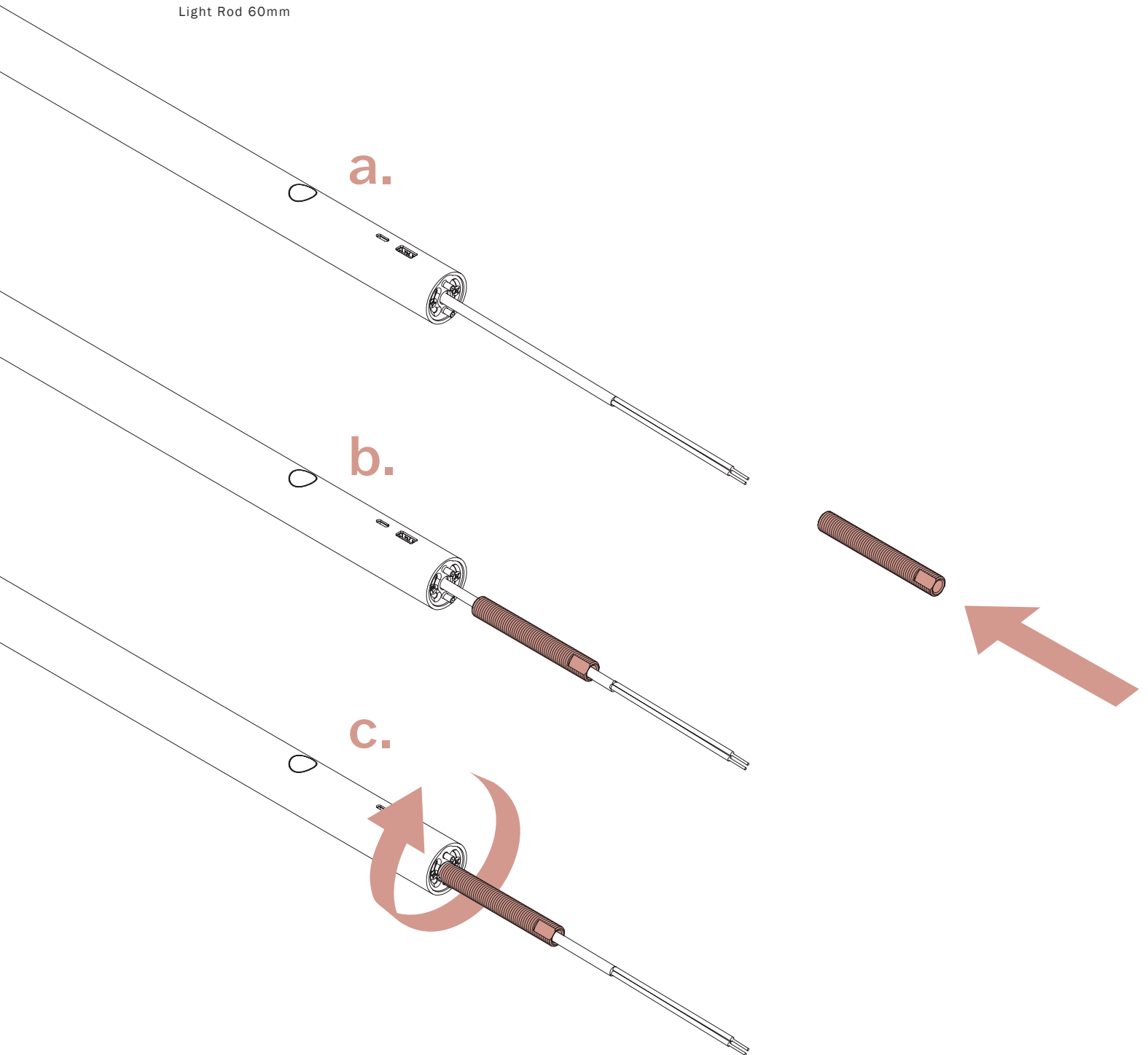
13mm Wrench

## 1. Attach Light Rod

Pass the cables in the light stem through the light rod (a.) and slide the light rod over the cable and up to the light stem (b.). Screw the light rod into the threaded plate in the light stem, and use the flat sections on the end of the light rod to tighten fully into the bottom of the lamp (c.).

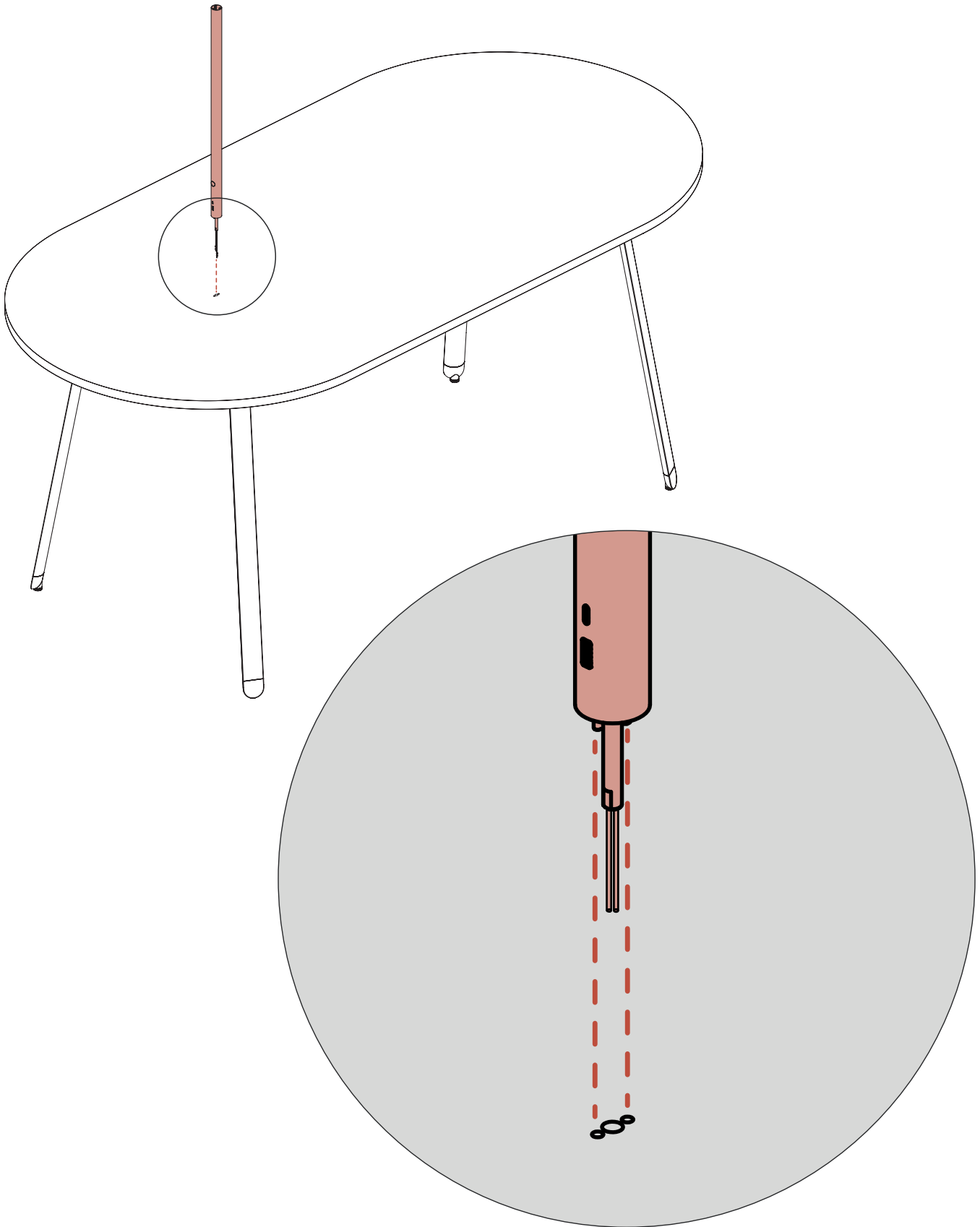


Light Rod 60mm



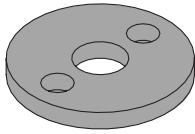
## 2. Place Light Stem

Pass the cables through the hole in the table surface and insert the stem into the mounting hole. Position the stem so the alignment pins go through the alignment holes in the surface.

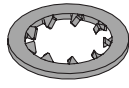


### 3. Secure Light Stem

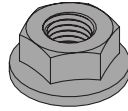
Pass the cables first through the mounting washer, then the lock washer, and last the mounting nut, and secure the stem to the surface by tightening the mounting nut to the light rod.



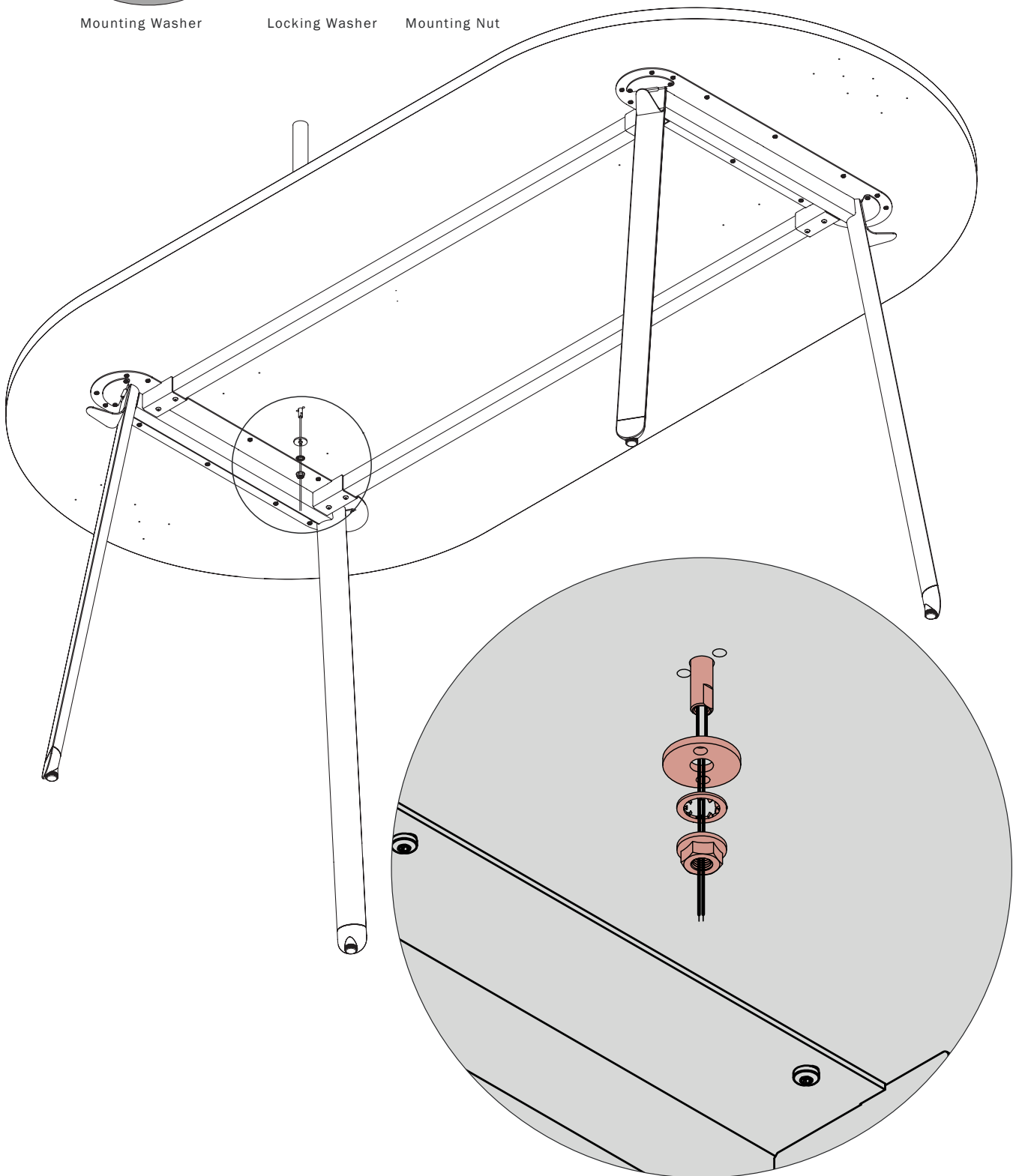
Mounting Washer



Locking Washer

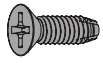


Mounting Nut

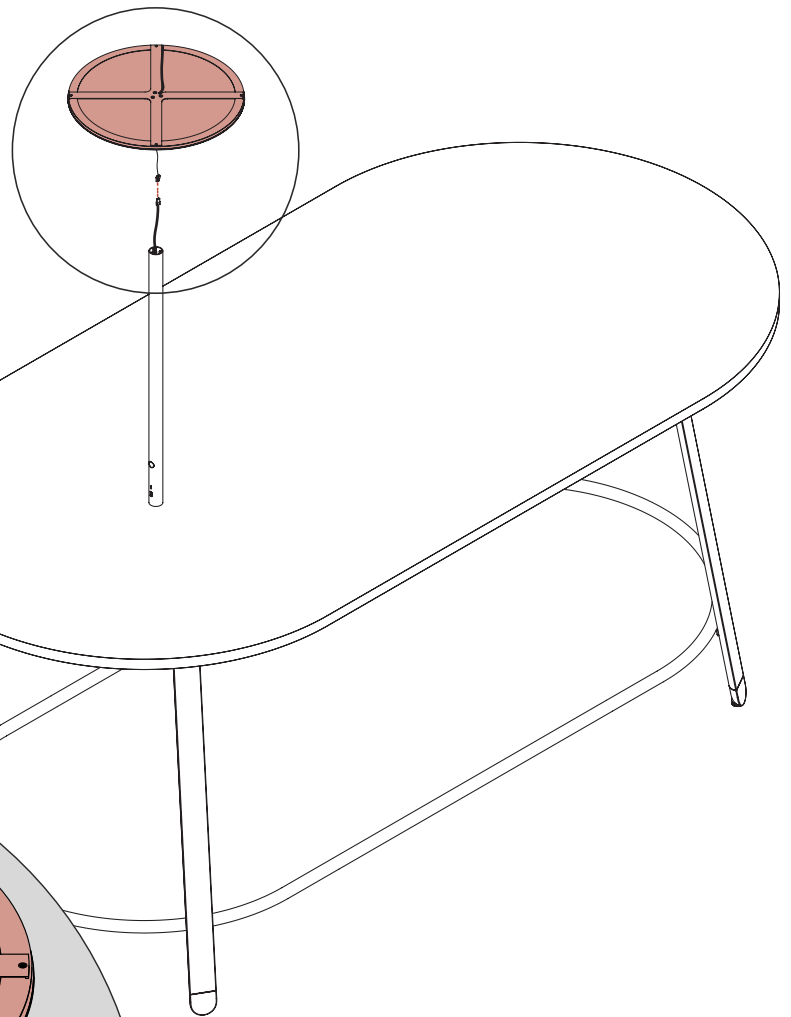


## 4. Attach Light Disc

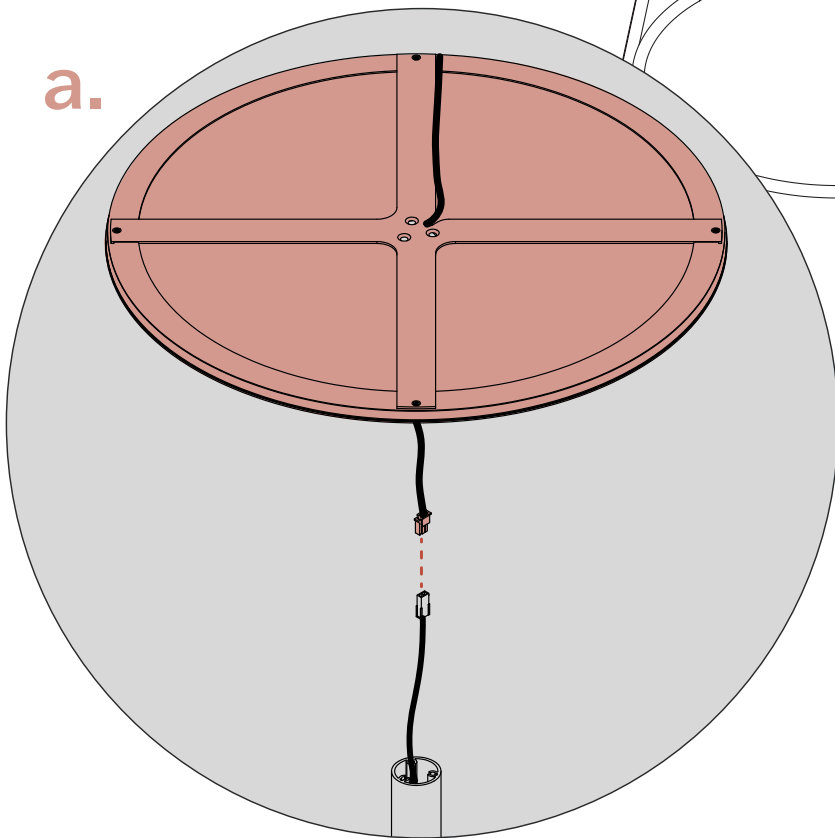
Plug the connector from the light disc into the connector from the stem (a.) and feed the excess cable down into the stem. Secure the light disc to the stem using (3) flat head screws (b.).



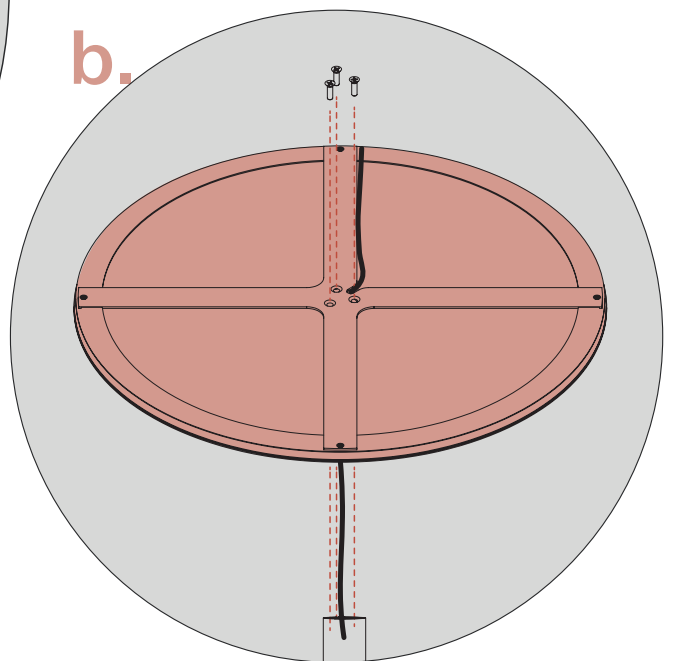
Thread Cutting Screw  
M4 X 12mm



a.



b.



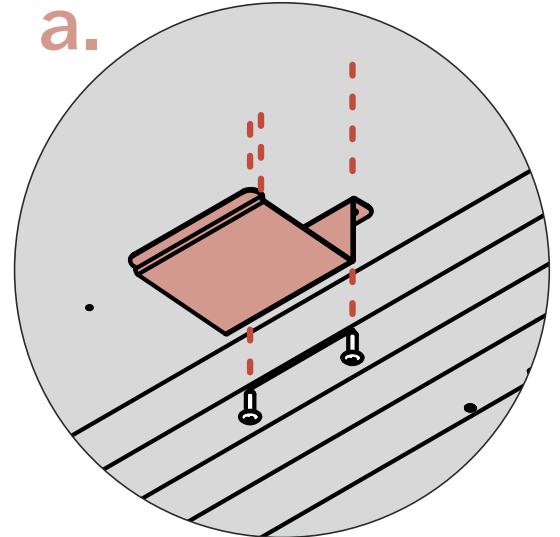
## 5. Secure Power Supply

Secure the power supply bracket to the underside of the surface using (2) screws (a.). Slide the power supply into the bracket until it clicks into place.

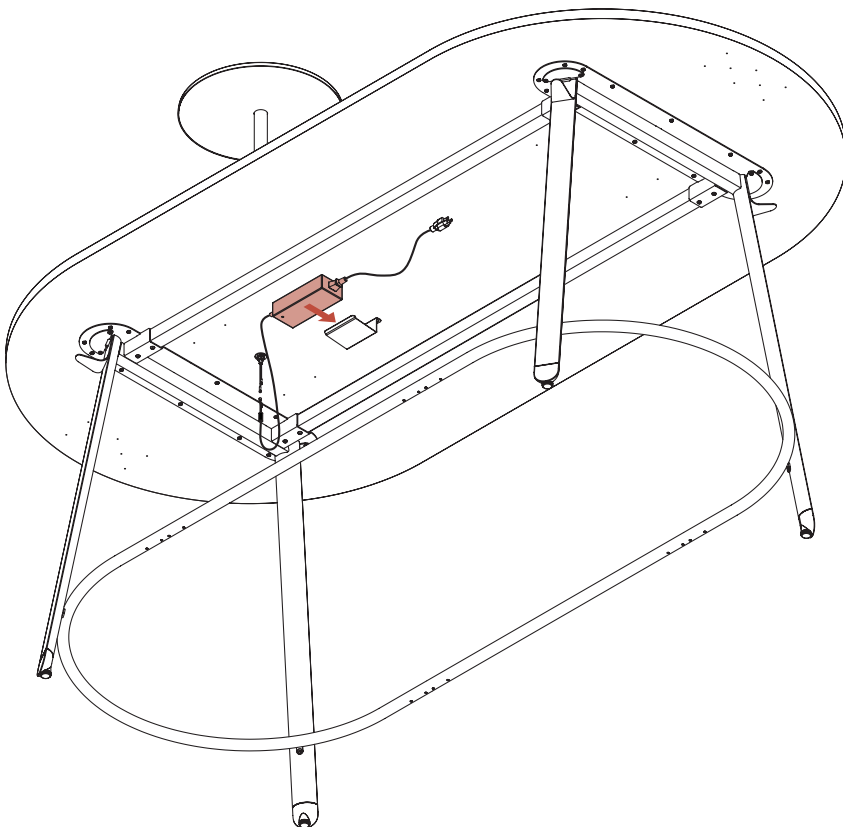
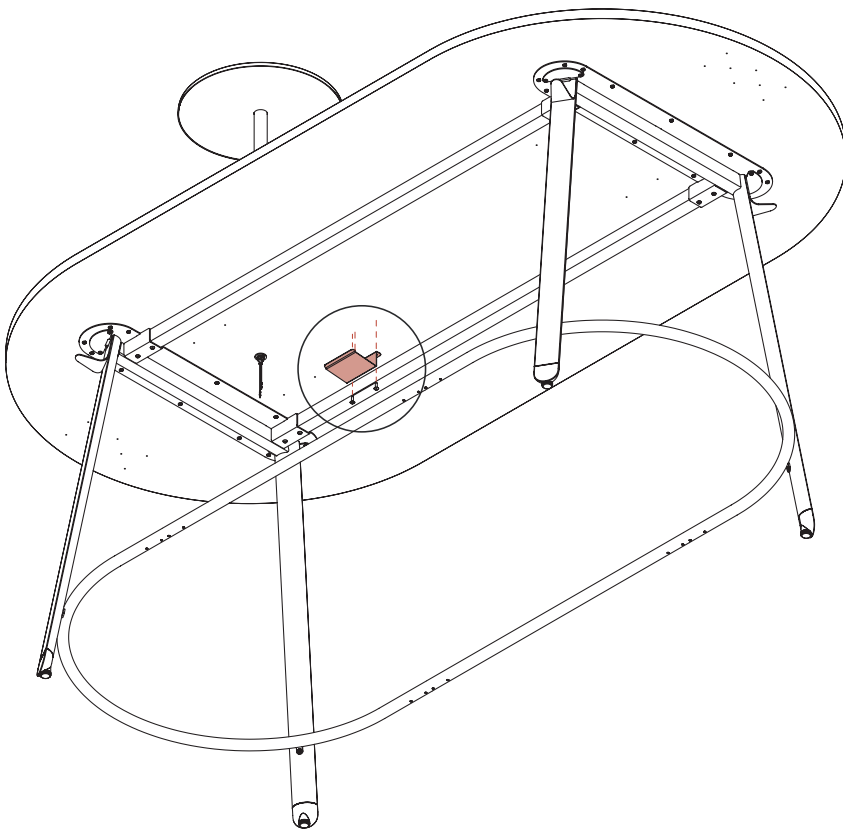
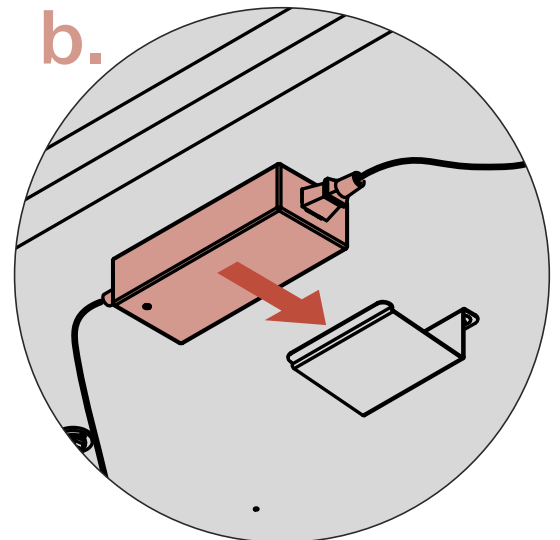


10 X 3/4" Pan  
Head Screw  
(122875)

a.



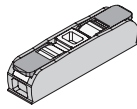
b.



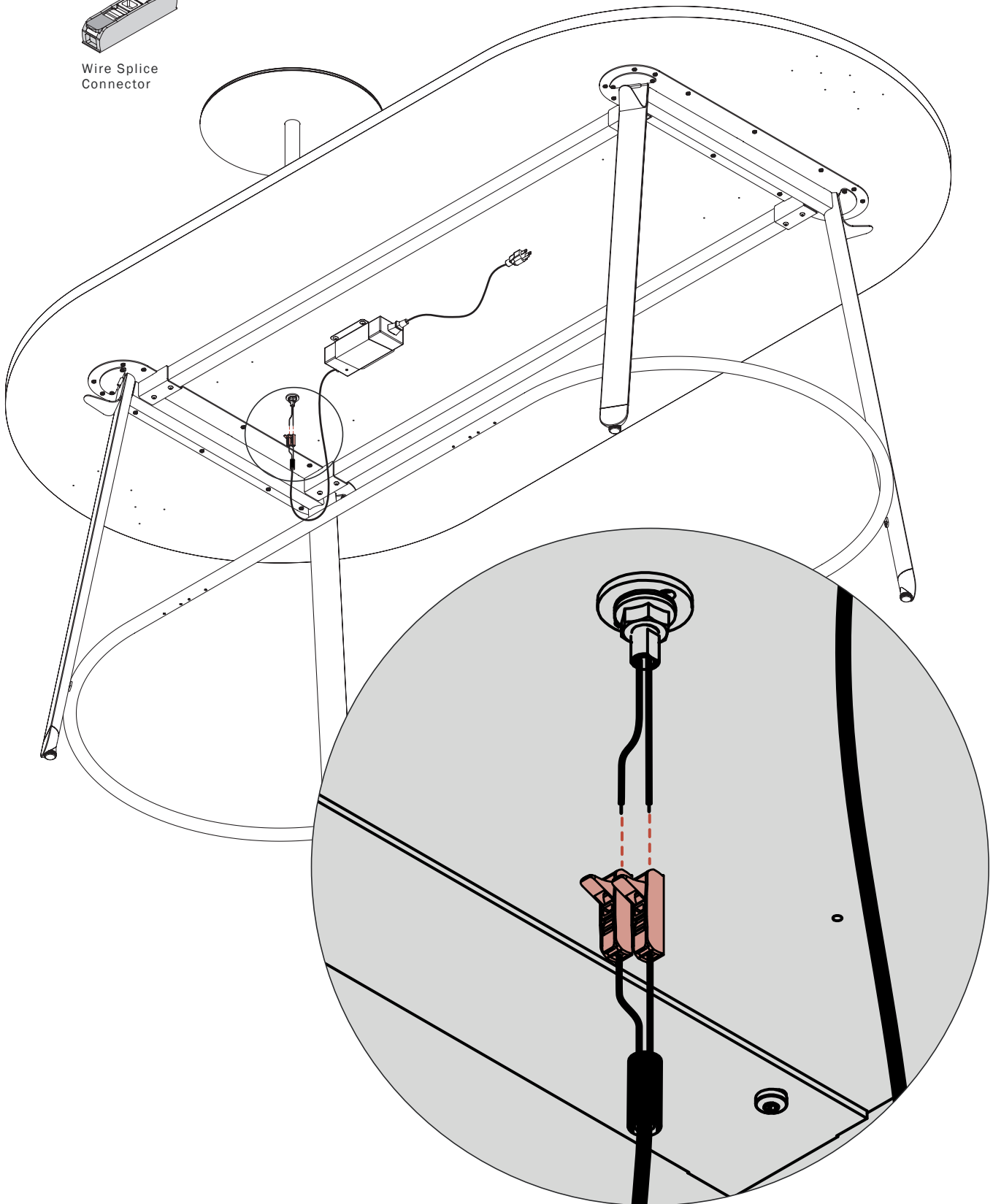


## 6. Connect Power

Connect the wires from the power supply to the wires on the light by inserting the cable into the wire splice connector and then snapping the connector closed. Make sure to connect red to red and black to black. Secure excess cable to the surface using the supplied alligator clips to keep it out of the way. Plug into power source and test.

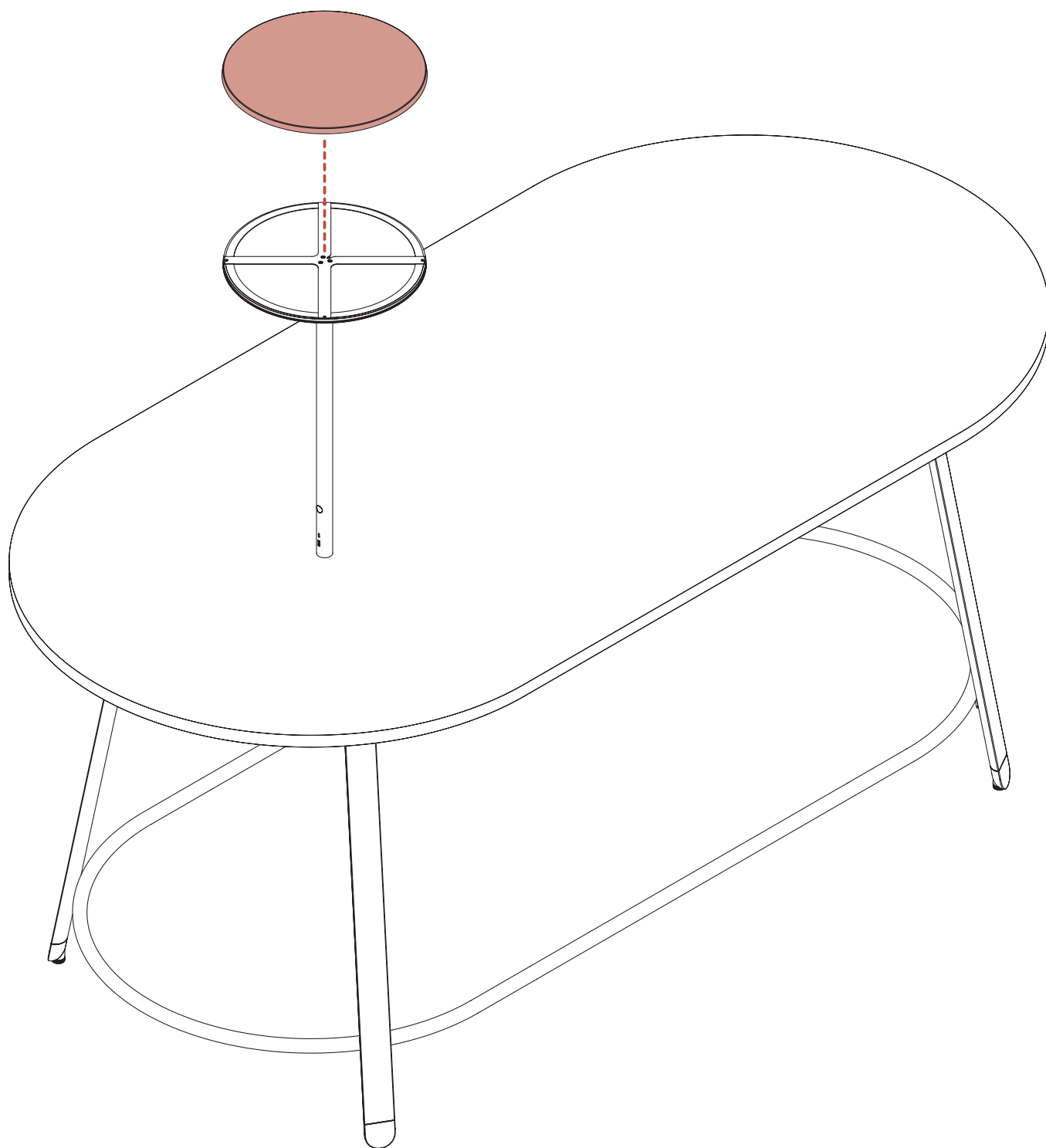


Wire Splice  
Connector



## 7. Attach Light Shade

Press the shade onto the light disc, applying even pressure around the perimeter until a snug and level fit.



## 8. Replacing Light Disc

A. Use a pair of thin, flat head screw drivers and work from a single point outwards around the lamp. This is easier with two people.

There is a tight friction fit between the steel shade and rubber gasket but the shade can be carefully removed using the method above.

B. Once the shade is removed the lamp body is mounted to the pole with three screws. When they are removed the lamp can be lifted off and then unplugged. There is excess cord in the lamp pole that allows it to be lifted away about 10"

Unplug the light disc from the stem, swap out the light disc for new one (PN 0002277), plug into the stem and reattach the light shade.

