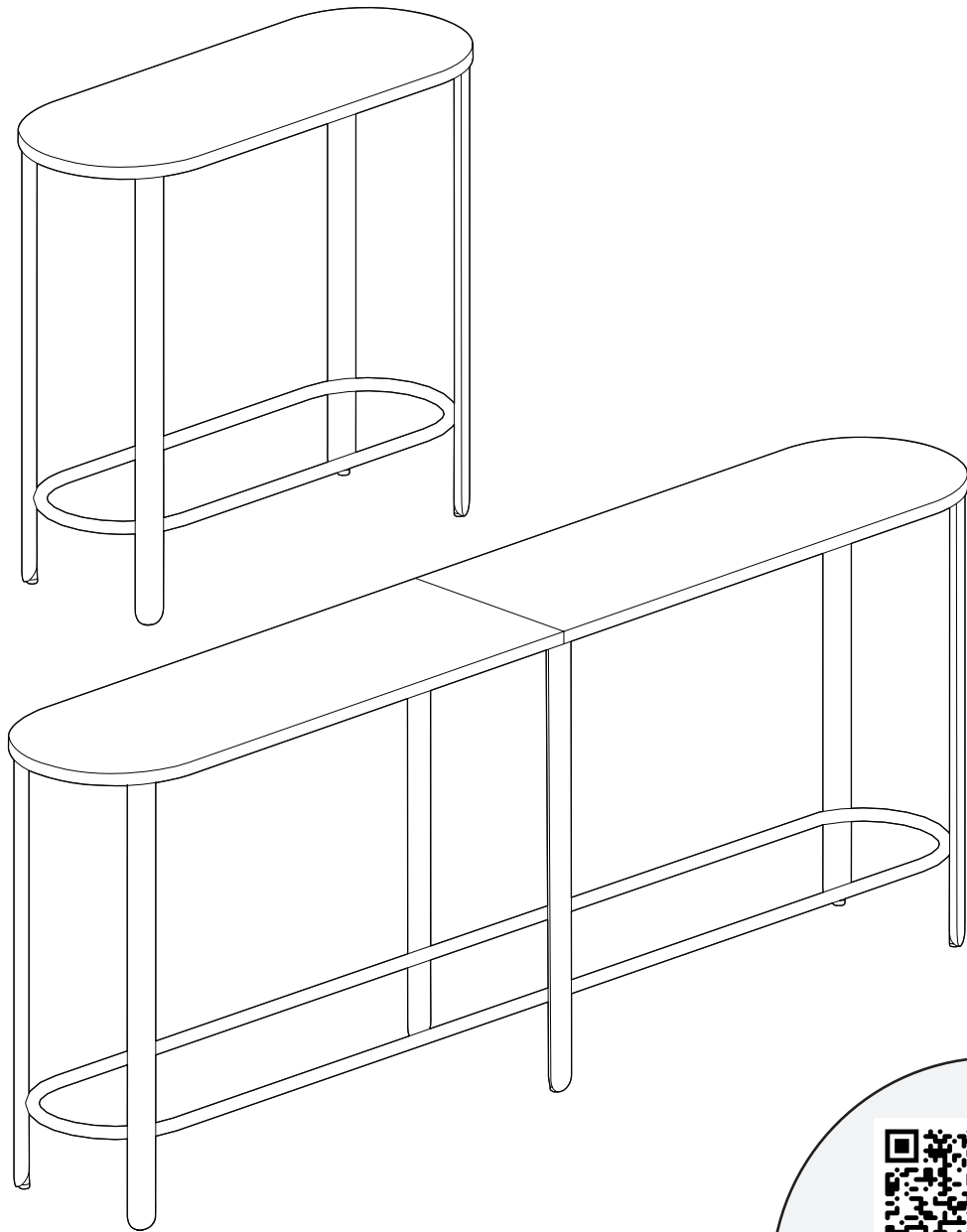


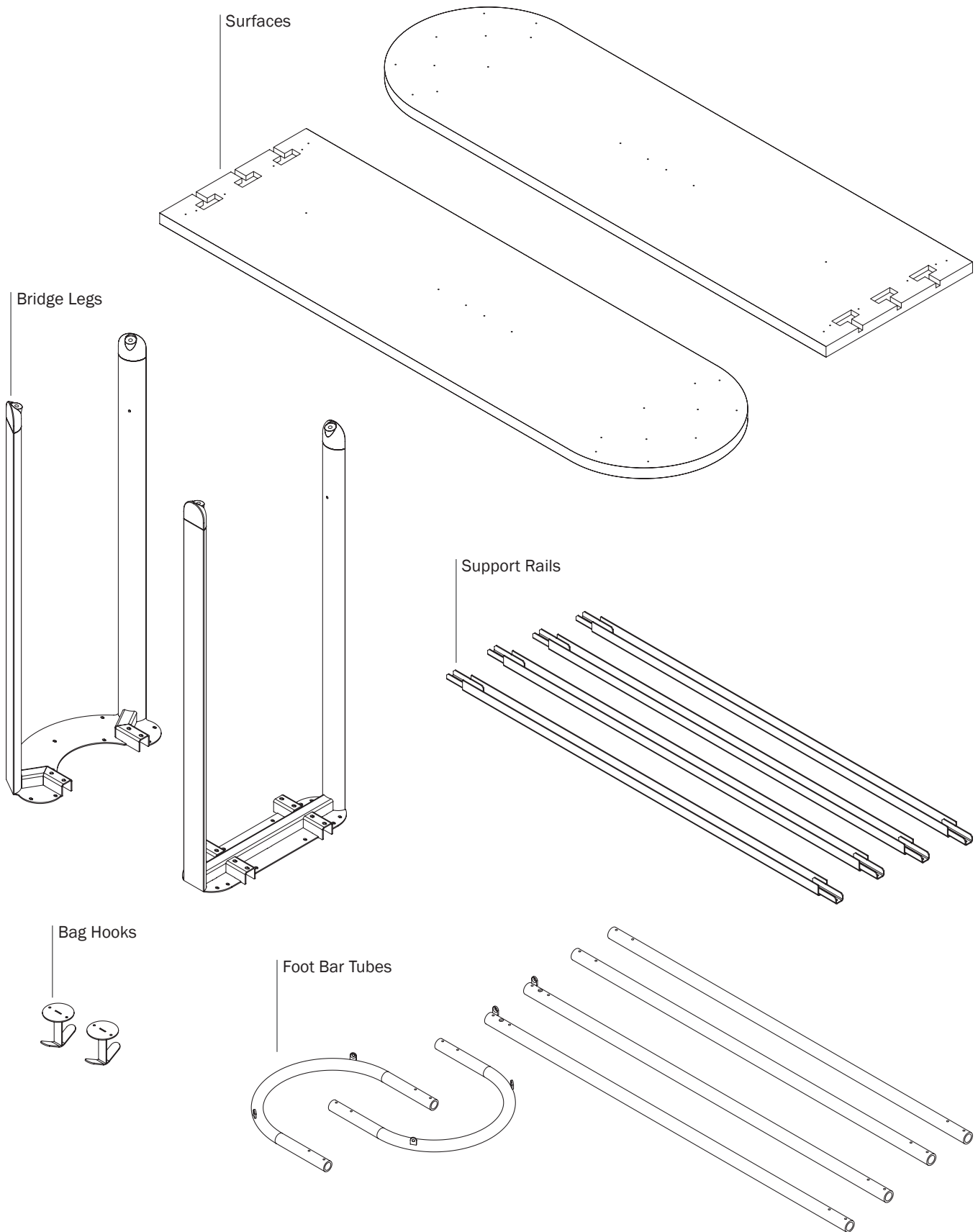
ASSEMBLY

Haven Perch Tables

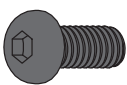


View Digitally

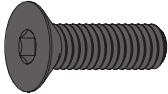
Perch Table Components



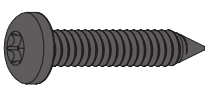
Hardware



M6-1.0 X 12mm
(125285)



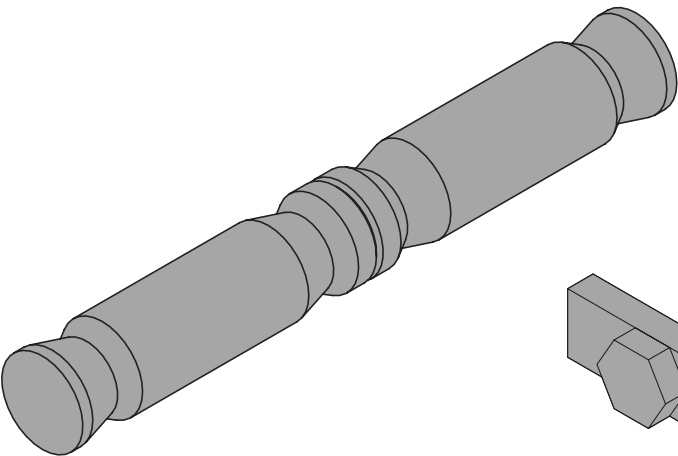
M6 - 1.0 X 20mm
Flat Head Screw
(0002150)



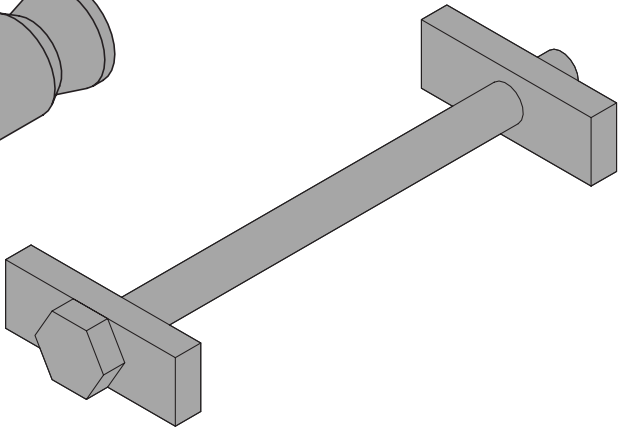
#10 X 1" Torx Head
Screw (0002147)



M6 - 1.0 X 6mm
Cup Point Set Screw
(0002246)

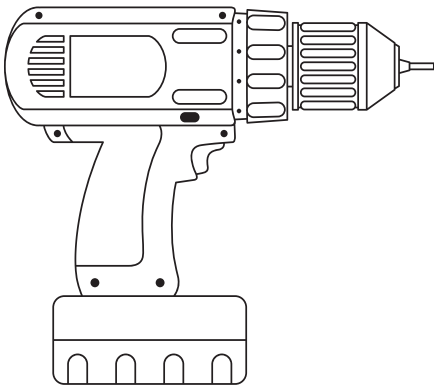


Foot Bar Connector
(0002146)



1/4 - 20 X 3.5" Bolt Tite-Joint
Connector (490006)
For two-piece surface tables only

Tools



Electric Drill



T25 Torx Bit



4mm Hex Bit



3mm Hex Bit



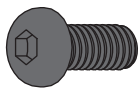
13mm Wrench



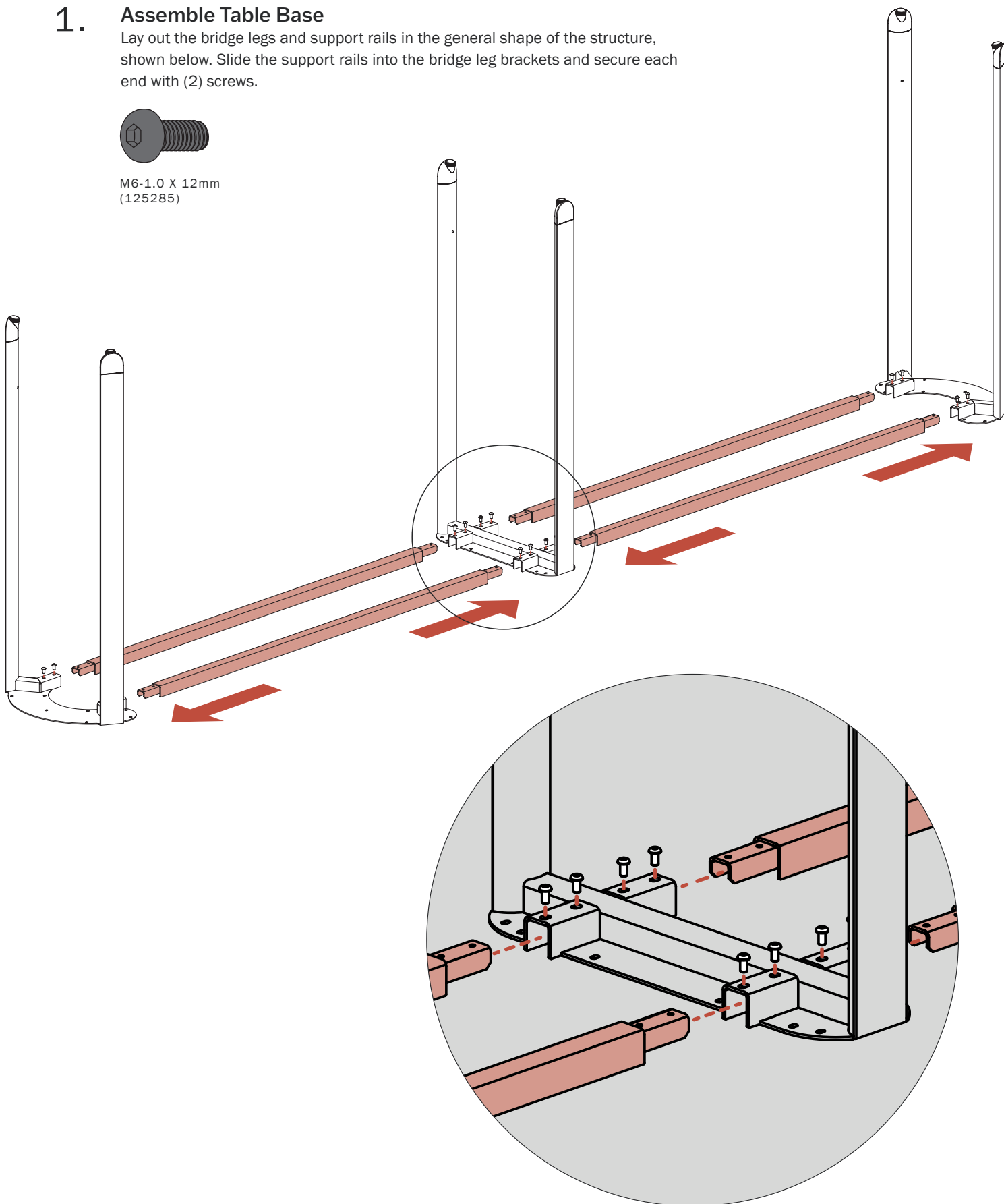
Some steps require two people to assemble

1. Assemble Table Base

Lay out the bridge legs and support rails in the general shape of the structure, shown below. Slide the support rails into the bridge leg brackets and secure each end with (2) screws.

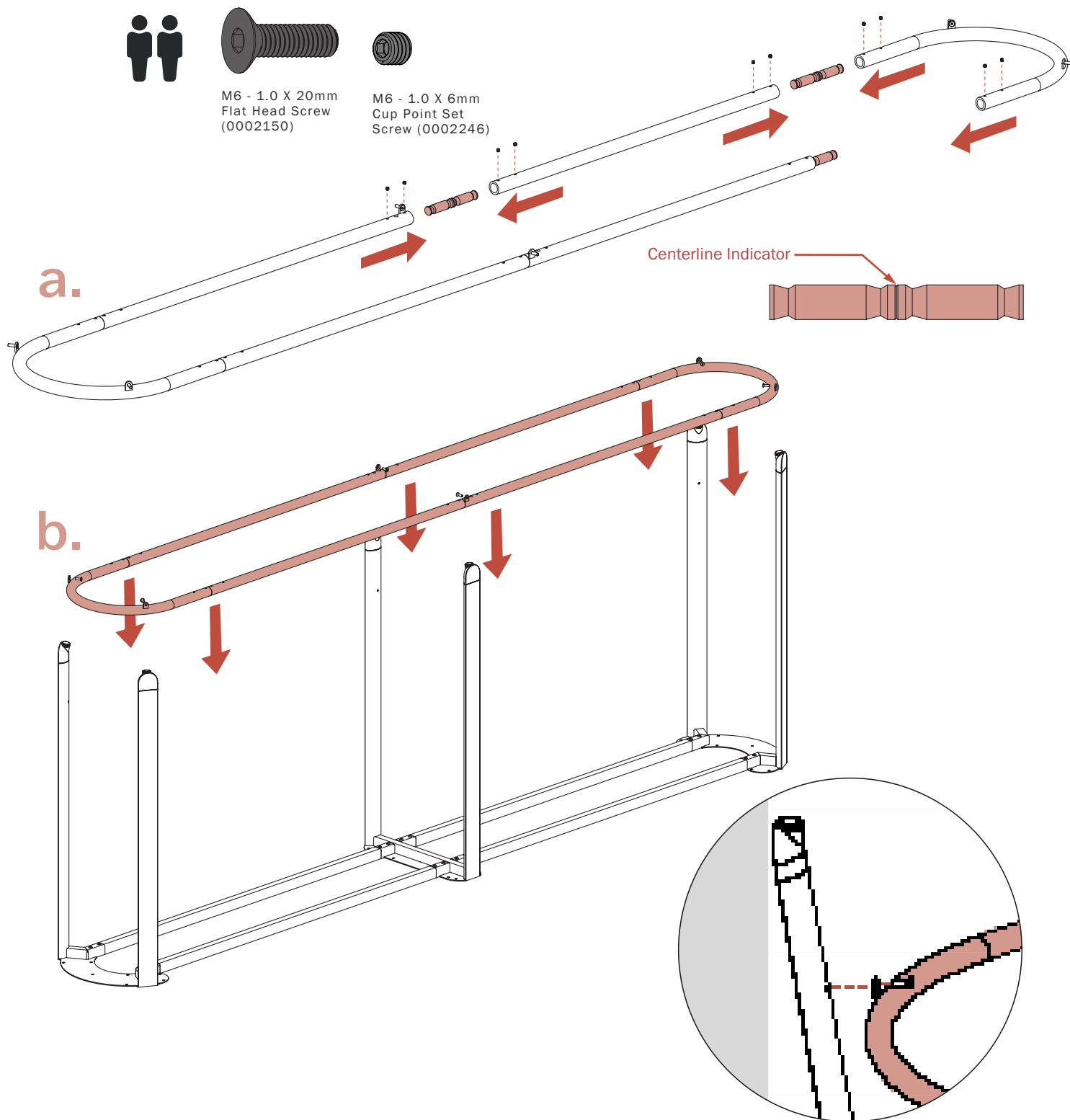


M6-1.0 X 12mm
(125285)



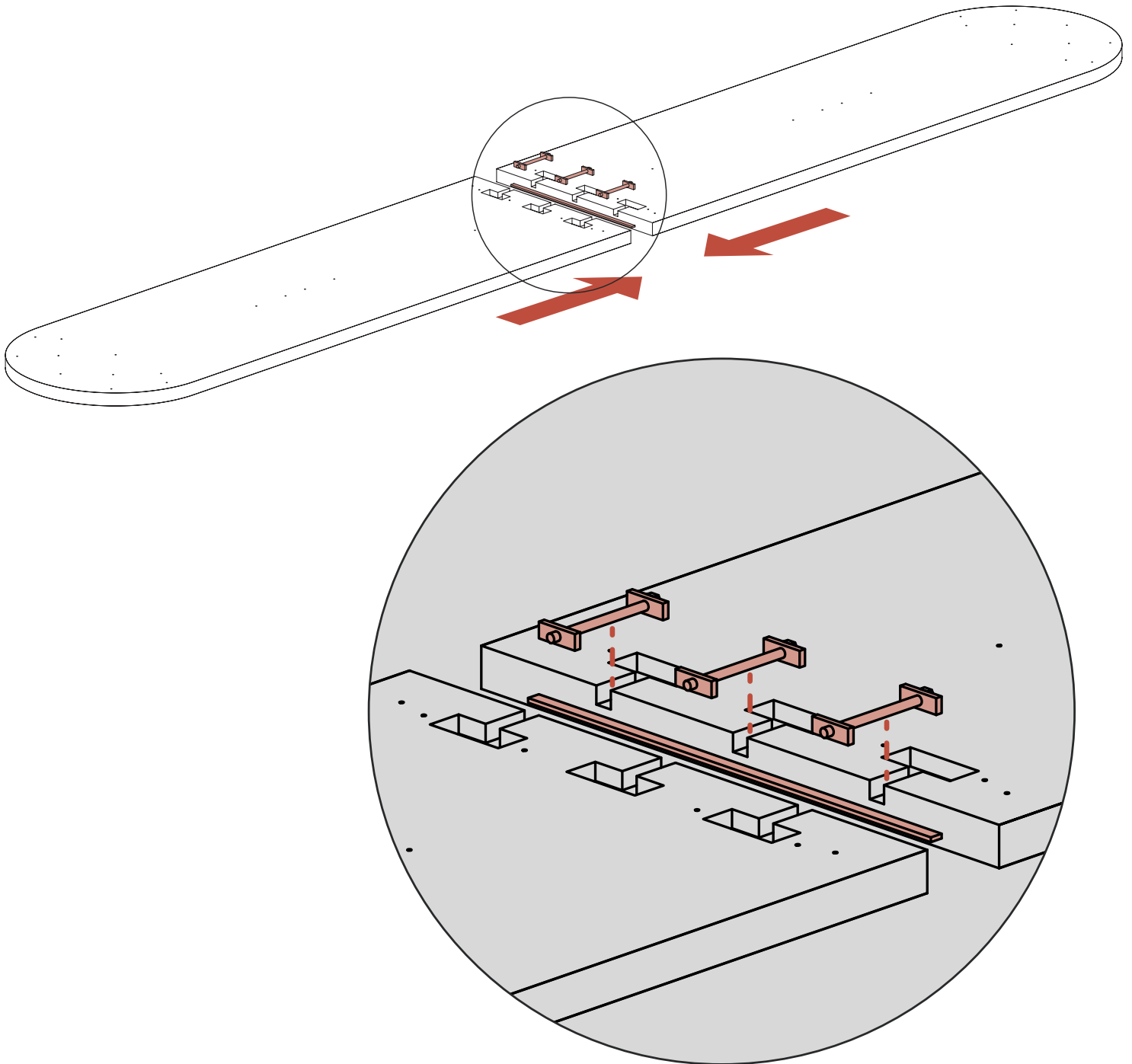
2. Assemble and Attach Foot Bar

Lay out the foot bar tubes ensuring all holes in the tubes are facing up. For two-surface tables, the straight tubes with tabs should be directly across from one another with the tabs facing outward. Insert a connector (0002146) into each tube joint and align the centerline indicator with the edge of the tube. Drive (2) set screws (0002246) per tube end to secure the connector in place. Repeat for remaining connections (a). This step requires two people: carefully lower the assembled foot bar into place inside the legs of the table so that the connector tabs line up with the holes in the legs. The tabs should be facing up. Have one person hold the foot bar steady while another secures it in place. Drive one screw (0002150) through each tab to affix the Foot Bar (b.).



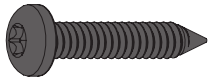
3. Connect Surfaces Together: Two-Piece Surface Tables Only

For two-piece surface tables, place surfaces upside down on a soft surface free of debris to reduce risk of damaging the surface. Push together making sure to line up the plastic spline in the groove of each surface. Place the tite joints into the dados in the top and tighten until the surfaces have no gap between them.

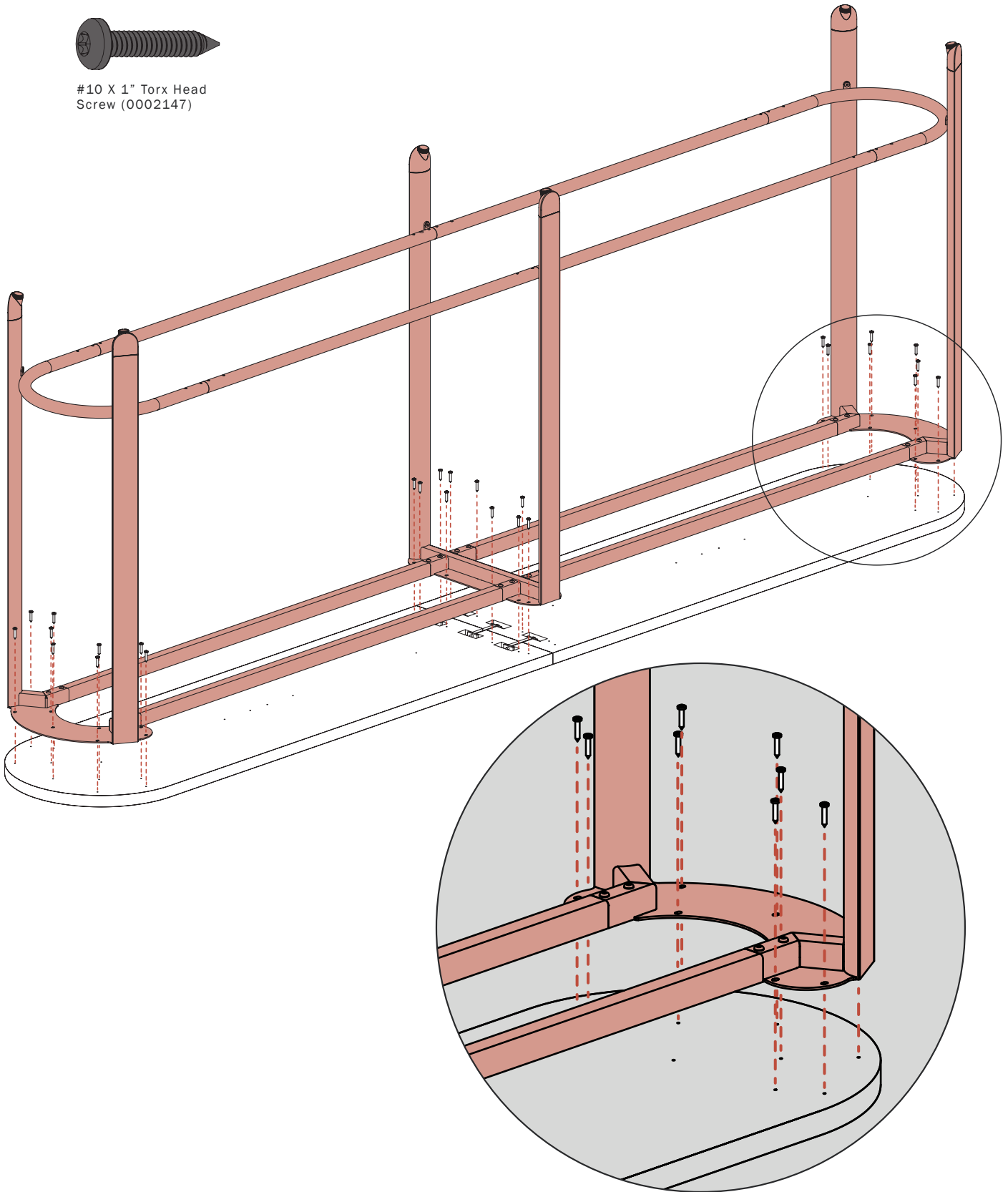


4. Attach Base to Surface

While surface is still upside down on the ground, position the base on top of the underside of the surface. Carefully align the holes in the bridge legs with the pilot holes in the surface. All the holes may not line up at once. Line up as many as possible, driving each screw. Leave the screws loose until all screws are in place. Flex the frame into place to align any remaining holes. Tighten all screws to secure the base onto the surface.



#10 X 1" Torx Head
Screw (0002147)



5. Attach Coat Hooks

If the table has one surface, position the coat hook centered on the underside of the surface, aligned with the pilot holes. If the table has two surfaces, position each coat hook centered on the underside of each surface, aligned with the pilot holes. Screw the hooks to the surface using (2) screws each.



#10 X 1" Torx Head
Screw (0002147)

