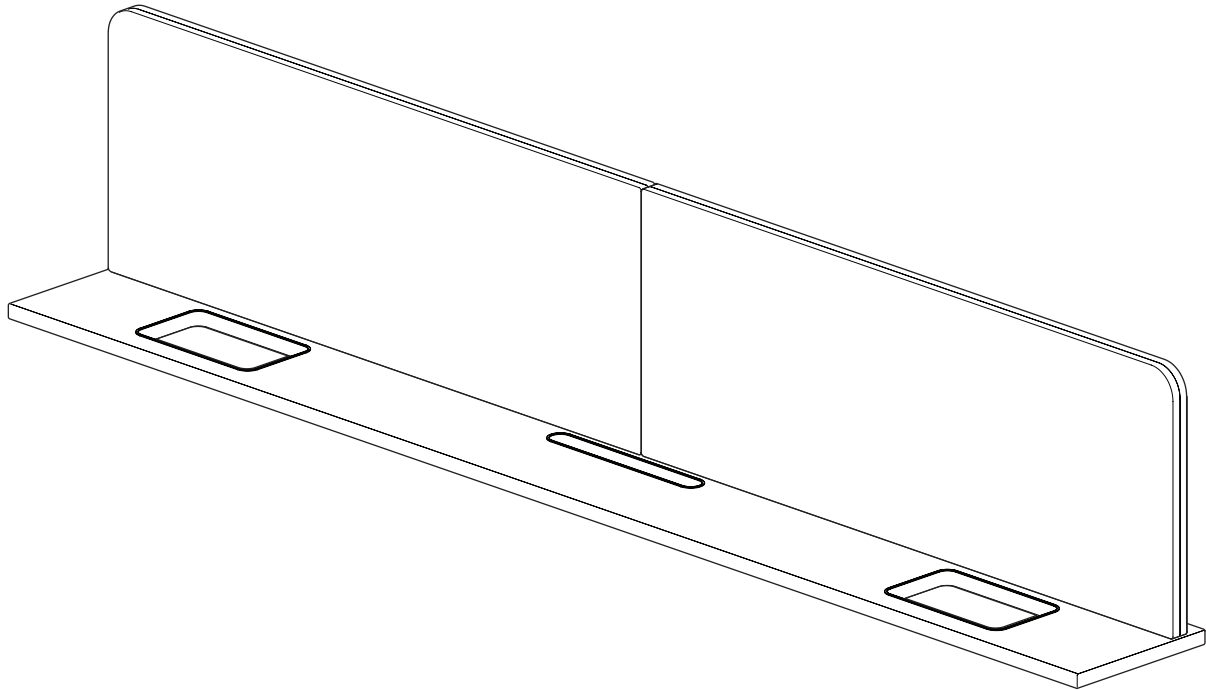


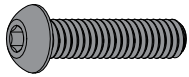
ASSEMBLY

Tonic Single Sided Infill Screen

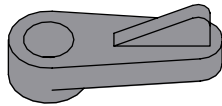


View Digitally

Hardware



5/16-18 X 1.25"
SCREW (125030)

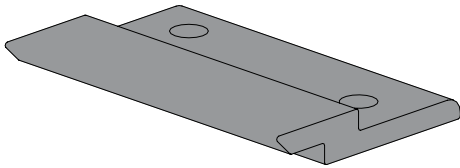


INFILL CLIP
(486915)

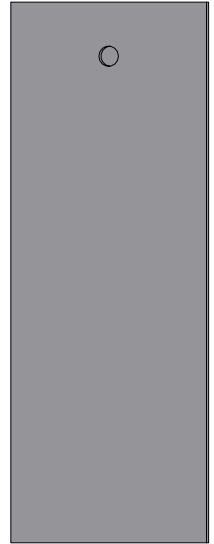


#8 X 3/4" WOOD
SCREW (122810)

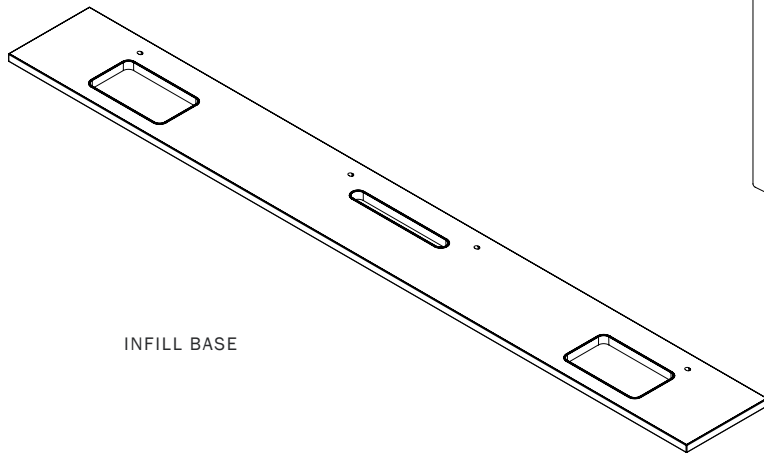
ALIGNMENT PLATE
(504611)



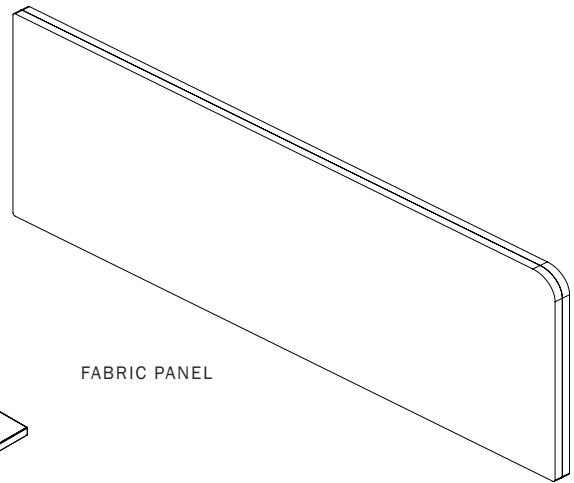
Z-CLIP (0000158)



Tonic Single Sided Fabric Infill Screen Components

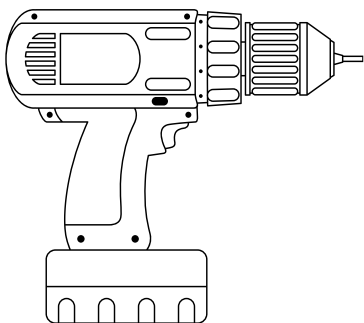


INFILL BASE



FABRIC PANEL

Tools



Electric Drill



P2 Phillips
Driver Bit

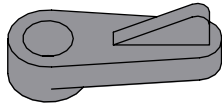


5/16 Hex Drill/
Driver Bit

1. Infill Clips

Turn over the infill (bottom side facing up) and drive supplied infill clips (486915) into all predefined pilot holes with #8 x 3/4" screws (122810) as shown below.

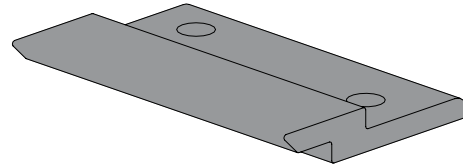
Drive supplied z-clips on all predefined pilot holes with #8 x 3/4" screws (122810) as shown below.
DO NOT USE THE 1" LONG SCREWS THAT ARE USED TO SECURE THE PRIMARY DESK SURFACES



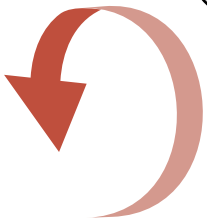
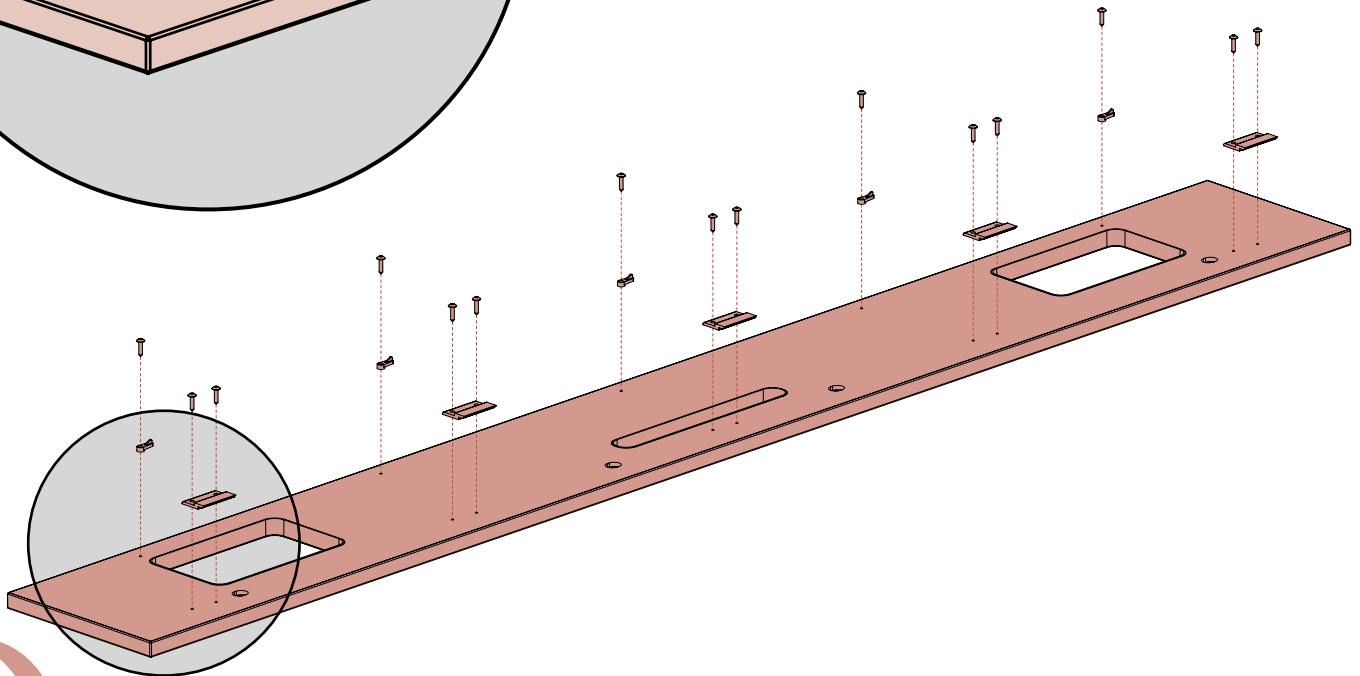
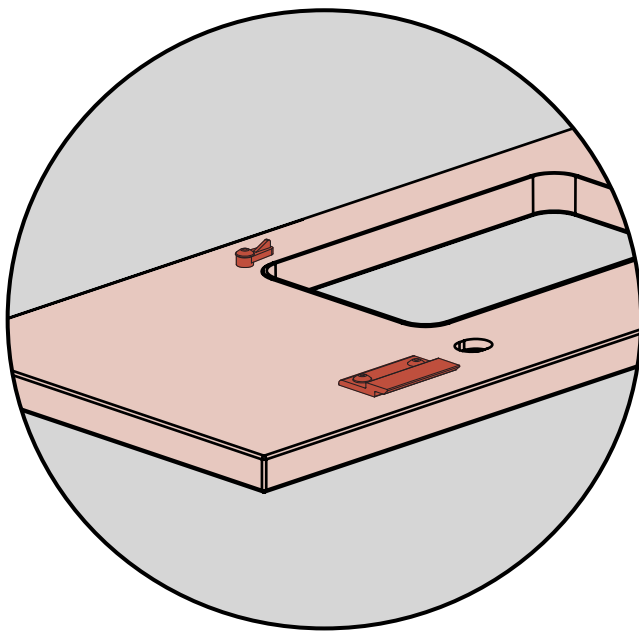
INFILL CLIP
(486915)



#8 X 3/4" WOOD
SCREW (122810)



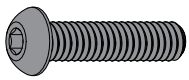
Z-CLIP (0000158)



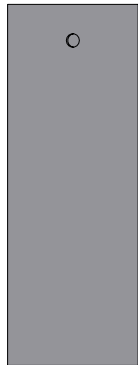
2. Attach Screen

Attach fabric panels to infill base with 2 screws (125030) per fabric panel.

For infills with multiple fabric panels, use the alignment plate (504611) between the two screens. Push the alignment plate (504611) into the slot in the fabric panels.



5/16-18 X 1.25"
SCREW (125030)



ALIGNMENT PLATE
(504611)

